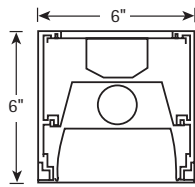
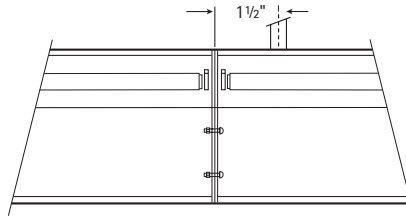
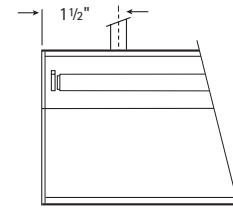


SECTIONS


Cross Section



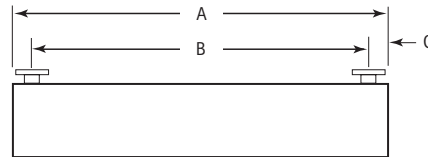
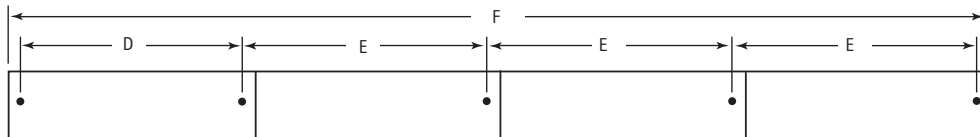
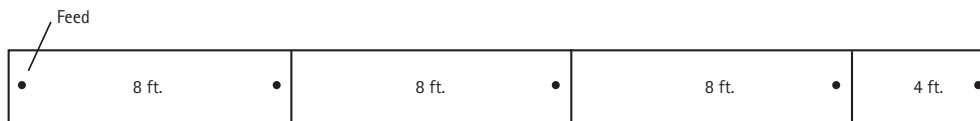
Connection Section



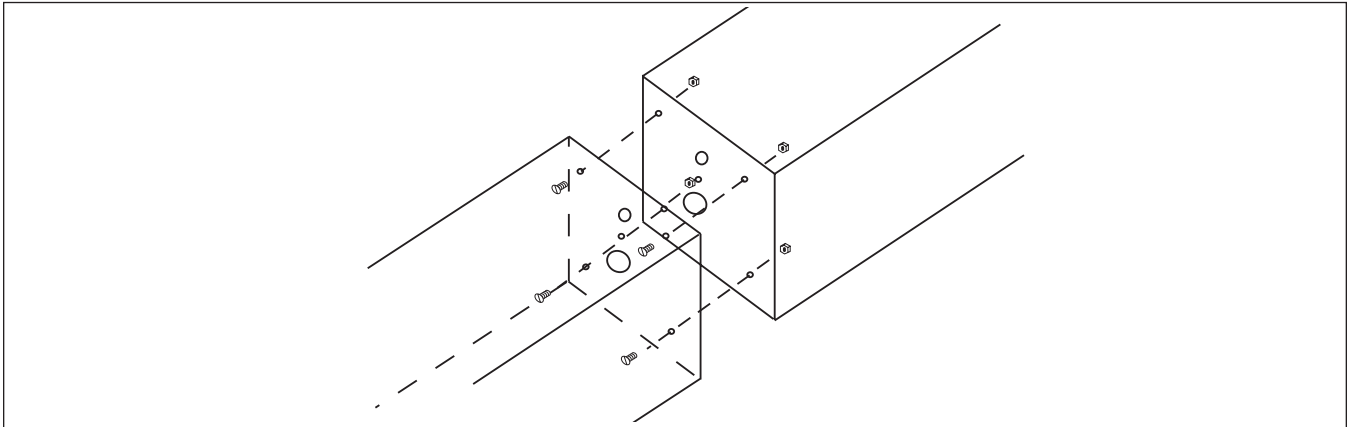
End Section

BOTTOM VIEW


Single

SINGLE MOUNTING (TYPICAL)

ROW MOUNTING

FACTORY STANDARD (TYPICAL ROW)

DATA CHART

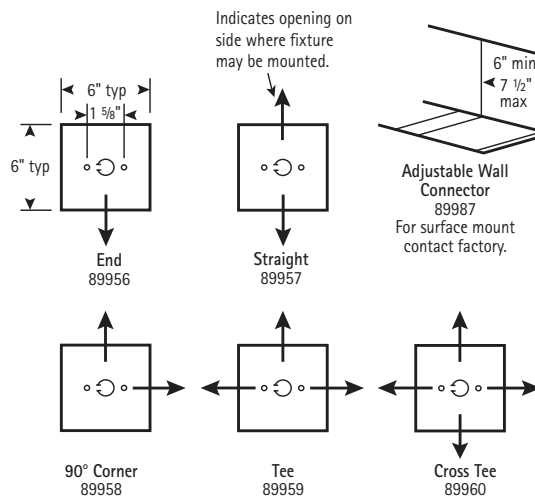
Nominal Length	Weight	A	B	C	D	E	F
4'	24 lbs.	49"	46"	1 1/2"	46"	49"	196"
8'	37 lbs.	98"	95"	1 1/2"	95"	98"	392"



Connector boxes are needed for all patterns with corners.

Connectors Installation Instructions:

1. Install pendant connectors (using knockouts "A" and "B") with stems or cable.
2. Bring fixture to connector and insert leads through hole "D".
3. Insert pre-driven screws in end plate through keyslots in connector. Fixture will hang.
4. Using 1/4-20 screw and hex nut (provided) fasten fixture to connector thru hole "E". Tighten hex nut and screws (used in step 3) from inside connector.
5. Make service lead connections inside connector.
6. Install snap-on cover.



Knockout Chart:

- A- 7/32" Diameter knockout
- B- 7/8" diameter knockout
- C- keyslot
- D- 1" diameter hole
- E- 9/32" diameter hole

