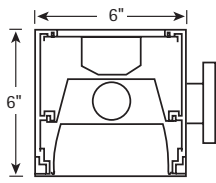
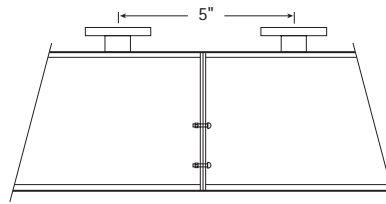


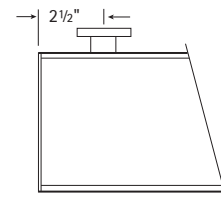
SECTIONS



Cross Section



Connection Section



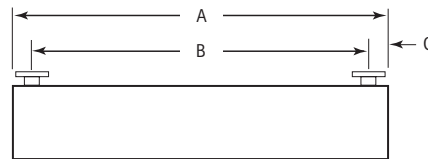
End Section

BOTTOM VIEW

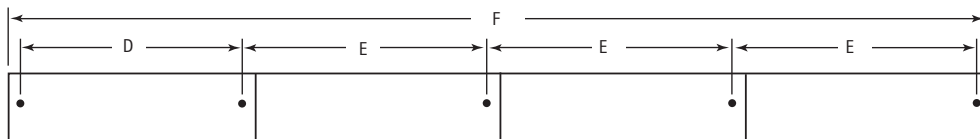


Single

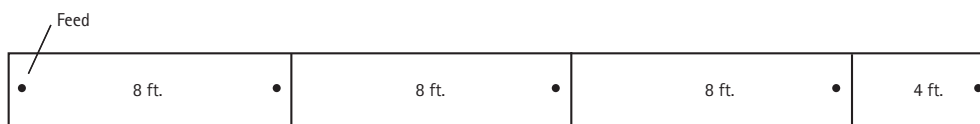
SINGLE MOUNTING (TYPICAL)



ROW MOUNTING

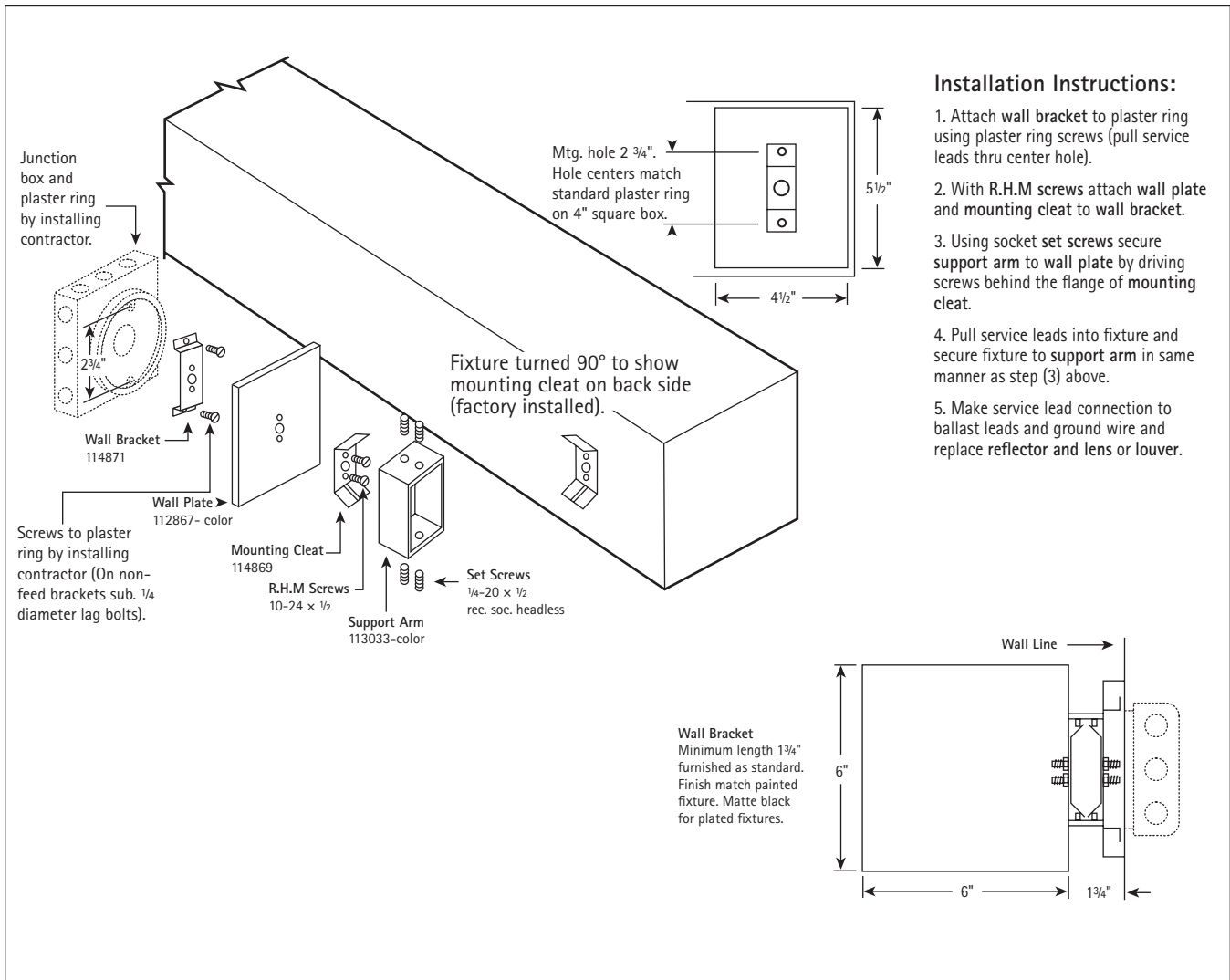


FACTORY STANDARD (TYPICAL ROW)



DATA CHART

| Nominal Length | Weight | A | B | C | D | E | F |
|----------------|---------|-----|-----|--------|------|-----|------|
| 4' | 24 lbs. | 49" | 44" | 2 1/2" | 44" | 49" | 196" |
| 8' | 37 lbs. | 98" | 93" | 2 1/2" | 93 " | 98" | 392" |



Installation Instructions:

1. Attach wall bracket to plaster ring using plaster ring screws (pull service leads thru center hole).
2. With R.H.M screws attach wall plate and mounting cleat to wall bracket.
3. Using socket set screws secure support arm to wall plate by driving screws behind the flange of mounting cleat.
4. Pull service leads into fixture and secure fixture to support arm in same manner as step (3) above.
5. Make service lead connection to ballast leads and ground wire and replace reflector and lens or louver.

Contact factory for pattern dimensions.