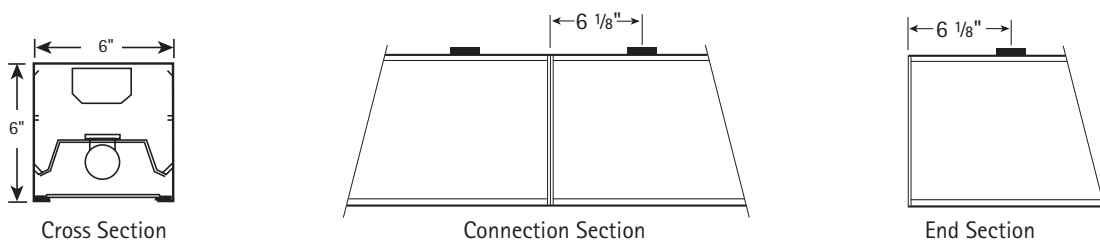
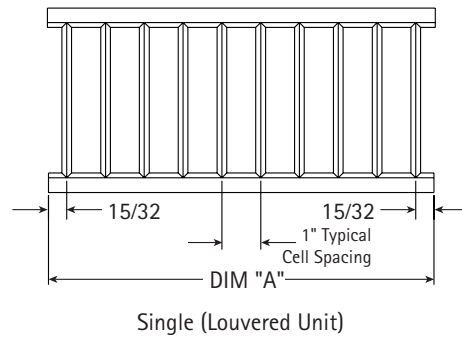
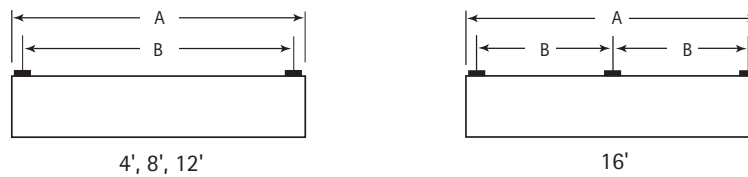
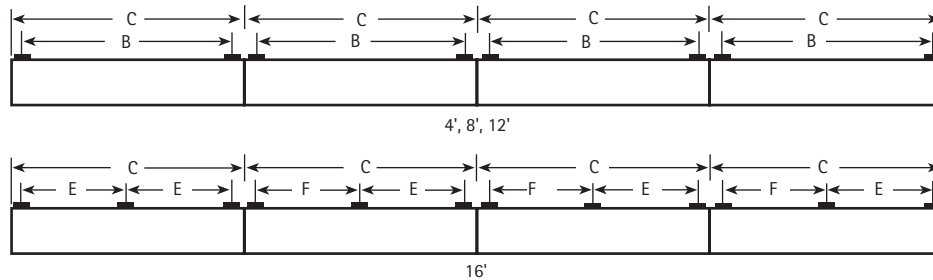
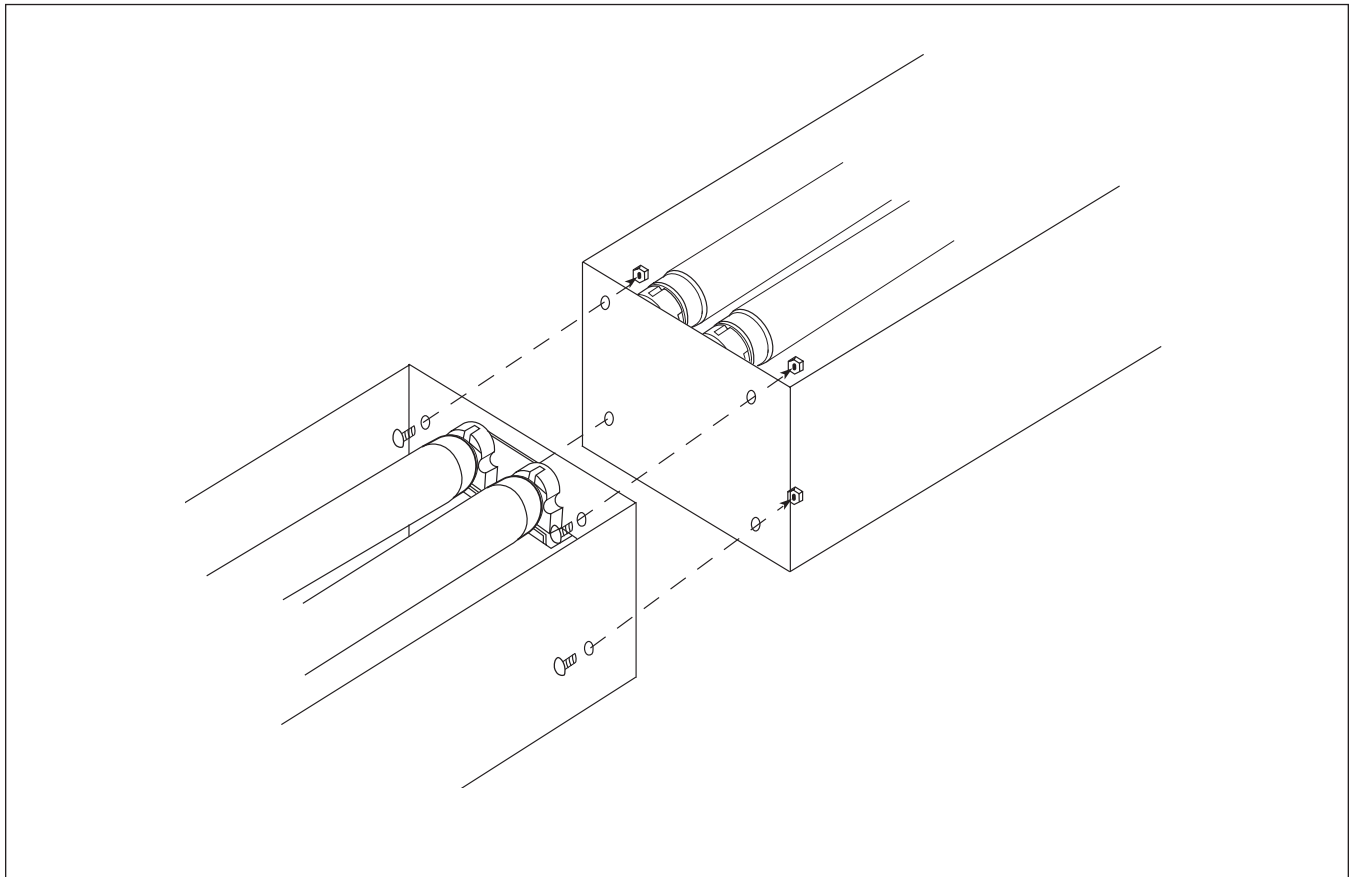


**SECTIONS**

**BOTTOM VIEW**

**SINGLE MOUNTING (TYPICAL)**

**ROW MOUNTING**

**FACTORY STANDARD (TYPICAL ROW)**

8 ft.	8 ft.	8 ft.	4 ft.
-------	-------	-------	-------

**DATA CHART**

Nominal Length	Weight	A	B	C	E
4'	30 lbs.	48 1/4"	36"	48 1/4"	—
8'	54 lbs.	96 1/4"	84"	96 1/4"	—
12'	80 lbs.	144 1/4"	132"	144 1/4"	—



**For use with Indirect and Direct/Indirect Fixtures**

**For use with Direct Fixture**

