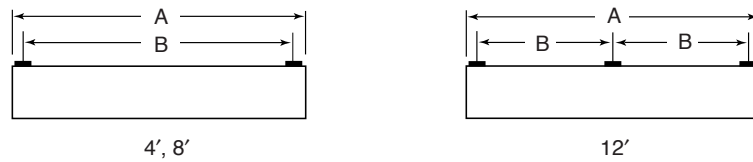
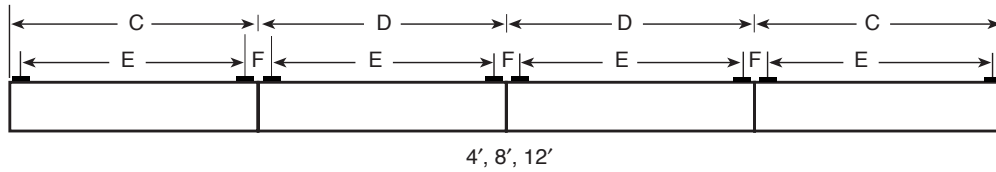


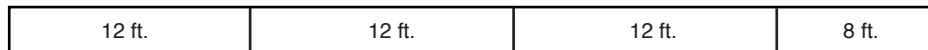
SINGLE MOUNTING (TYPICAL)



ROW MOUNTING



FACTORY STANDARD (TYPICAL ROW)

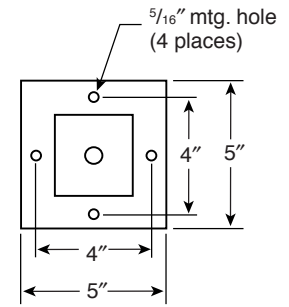
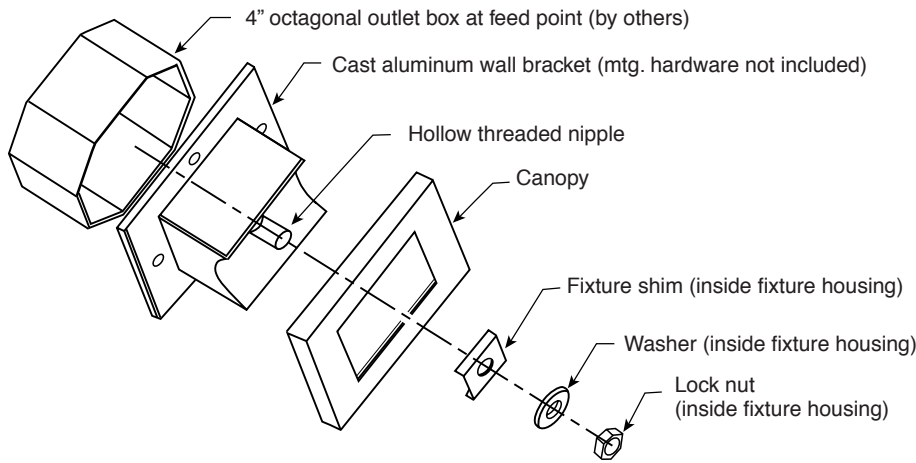


DATA CHART

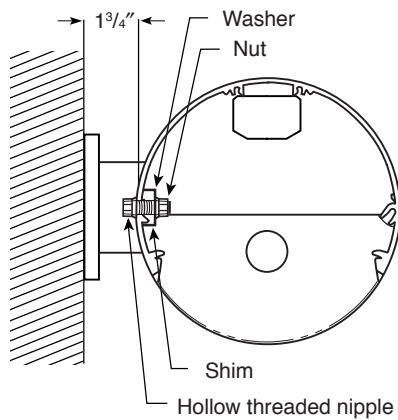
Nominal Length	Weight	A	B	C	D	E	F
4'	33 lbs.	48 1/2"	36"	48 3/8"	48 1/4"	36"	12 1/4"
8'	68 lbs.	96 1/2"	84"	96 3/8"	96 1/4"	84"	12 1/4"
12'	88 lbs.	144 1/2"	66"	144 3/8"	144 1/4"	66"	12 1/4"

Note: Dimensions shown are for standard, non-rotational mounting. For rotatable products contact factory.

WALL BRACKET INSTALLATION



Wall Bracket Detail



- 1) Secure nipple to bracket with locknut.
- 2) Attach wall bracket to wall securely. Feed wires should be pulled through the hollow threaded nipple.
- 3) Install canopy over wall bracket until it is firmly seated against wall.
- 4) Align the hole in the fixture with the hollow threaded nipple.
- 5) Install fixture shim, washer, and lock nut inside the fixture housing.
- 6) Make wire connections within the fixture housing and ground inside fixture.

CORNER DIMENSIONS

