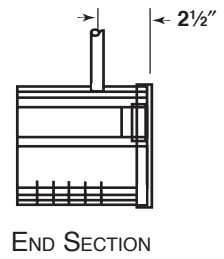
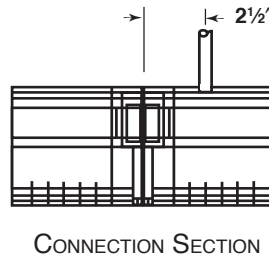
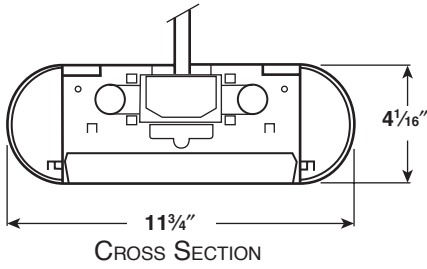
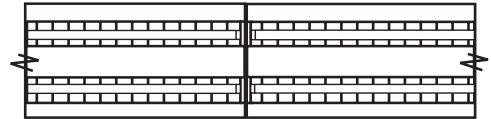


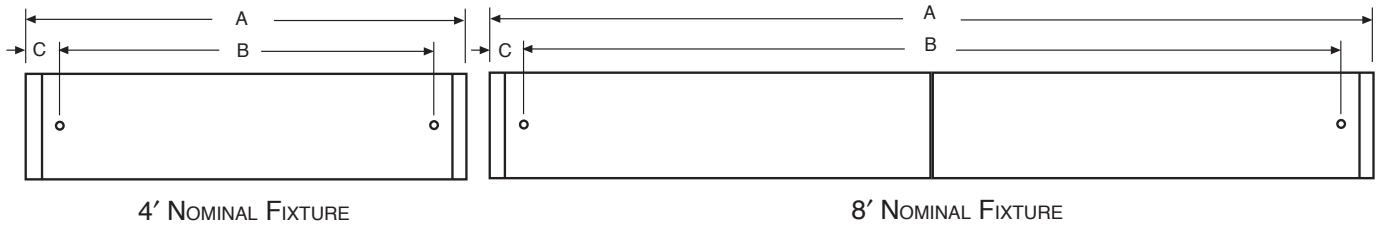
SECTIONS



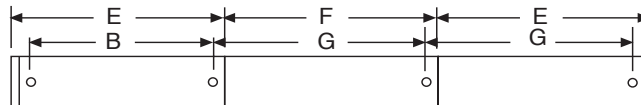
BOTTOM VIEW



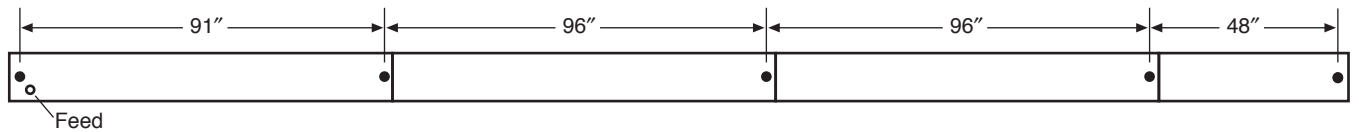
SINGLE MOUNTING (TYPICAL)



ROW MOUNTING



FACTORY STANDARD (TYPICAL ROW)

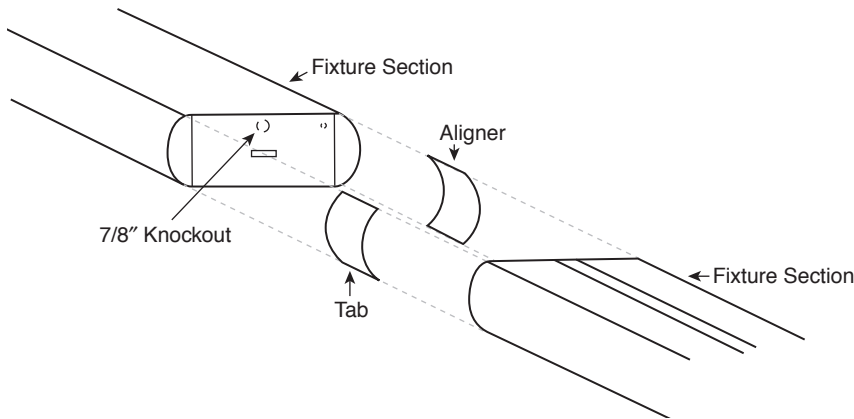


DATA CHART

Nominal Length	Weight	A	B	C	E	F	G
4'	16 lbs	48 1/4"	43"	2 5/8"	48 1/8"	48"	48"
8'	32 lbs	96 1/4"	91"	2 5/8"	96 1/8"	96"	96"

Note: "A" dimensions include (2) 1/8" thick end caps.

FIXTURE CONNECTIONS



INSTALLATION INSTRUCTIONS

1. Remove 7/8" knockout from the metal end plate of each fixture section.
2. Slide each aligner (2) into the end of one fixture section engaging the radiused side panels. Insert each aligner until the tab provided in each aligner stops against the end of the side panel.
3. Slide the mating fixture section over the aligners.
4. Secure the fixture sections with the (4) screws provided.

PATTERNS

CONTACT FACTORY