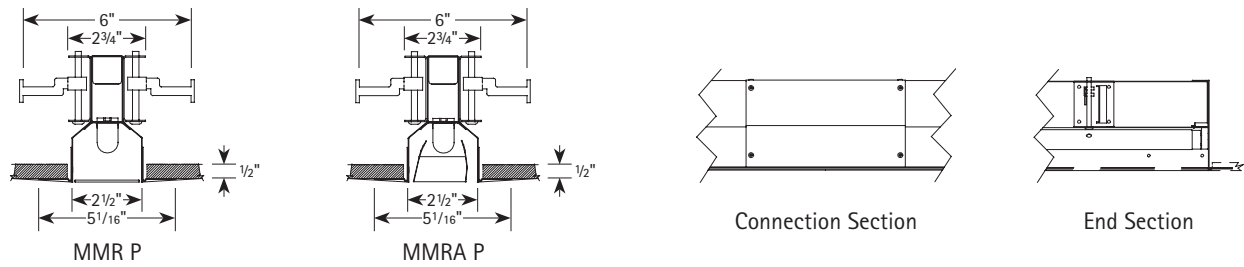
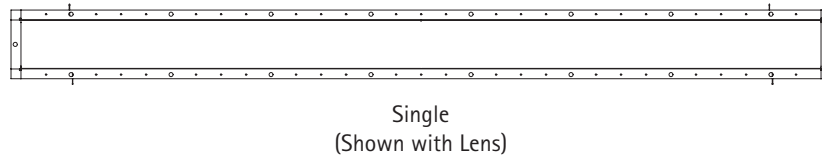
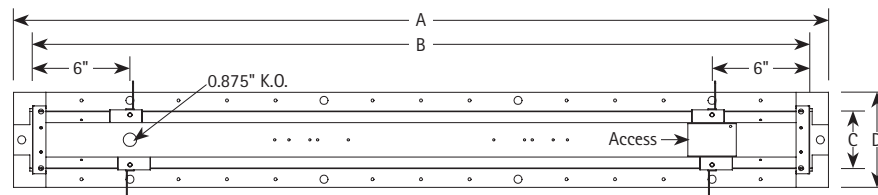
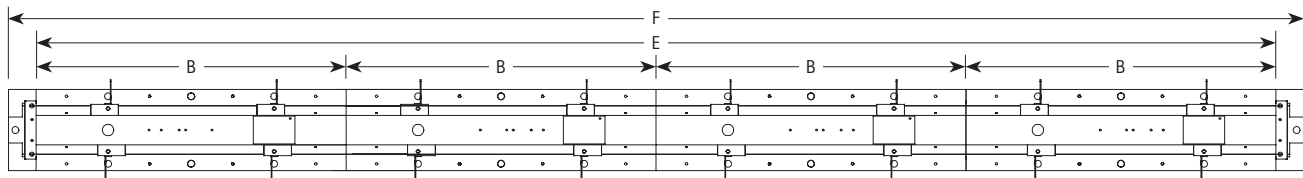
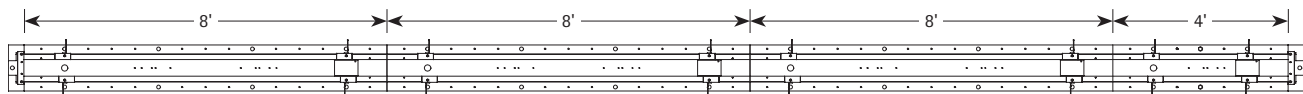
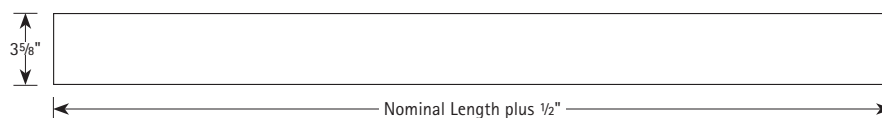
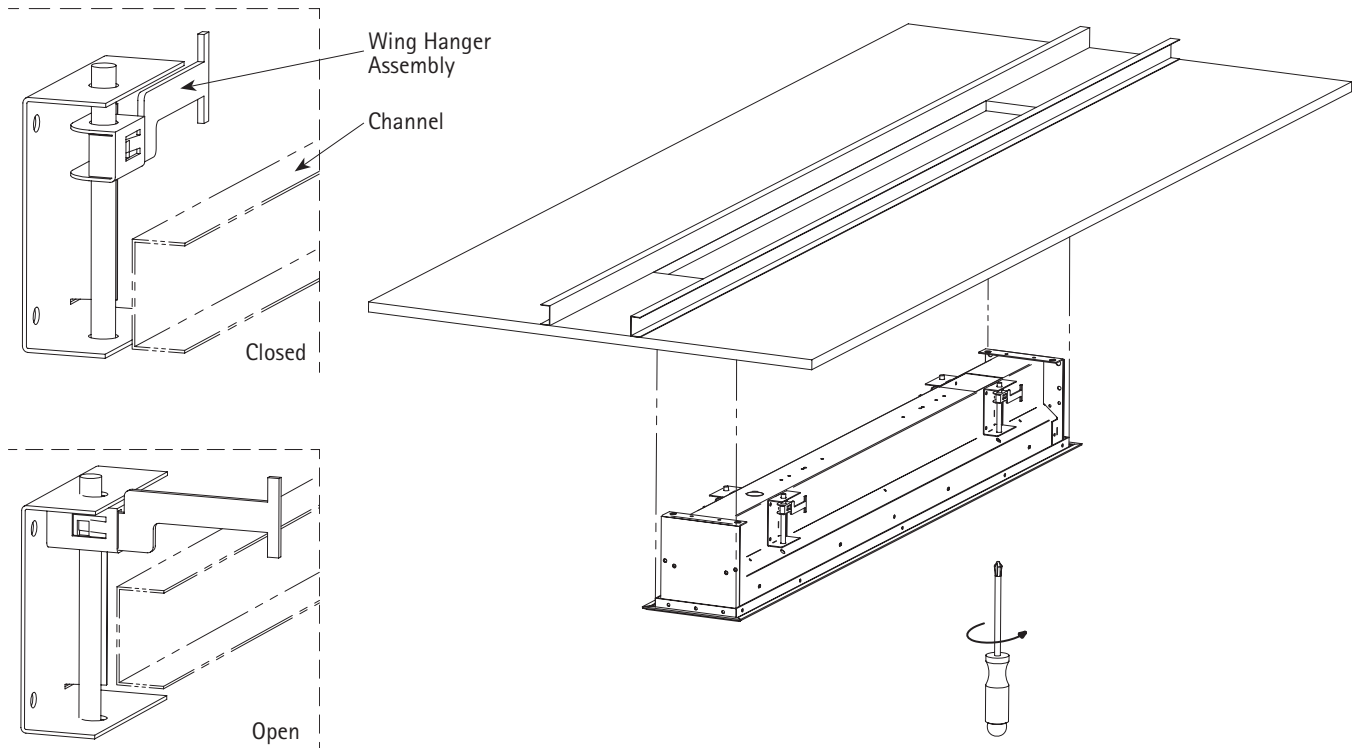


**CROSS SECTIONS**

**BOTTOM VIEW**

**SINGLE MOUNTING (TYPICAL)**

**ROW MOUNTING**

**FACTORY STANDARD (TYPICAL ROW)**

**CUT OUT (TYPICAL ROW)**

**DATA CHART**

Nominal Length	Weight	A	B	C	D	E	F
4'	14 lbs.	50 3/8"	48"	2 1/2"	5 1/16"	192"	194 3/8"
8'	25 lbs.	98 3/8"	96"	2 1/2"	5 1/16"	384"	386 3/8"

**INSTALLATION INSTRUCTIONS**


1. Cut opening to prescribed dimensions.
2. Add structure around perimeter of opening, as necessary, for supporting wing hangers.
3. Remove shielding from fixture and set aside.
4. Insert Phillips head screwdriver through hole in housing engaging wing hanger screwhead. Turn screwdriver clockwise to orient wing hanger parallel with fixture body. (Repeat 4 times)
5. Remove supply wire access plate from top of fixture housing.
6. Attach access plate to supply flex.
7. Raise fixture to ceiling. Make electrical connections to fixture and reattach access plate.
8. Pass fixture thru opening until fixture housing trim is flush with ceiling.
9. Insert Phillips head screwdriver through hole in housing engaging wing hanger screwhead. Turn screwdriver counter clockwise to open wing hanger assembly so it is resting on structure around perimeter of opening. (Repeat 4 times and screw each assembly until tight)
10. Mud/plaster up to aperture of fixture.
11. Install lamps in fixture.
12. Install shielding.