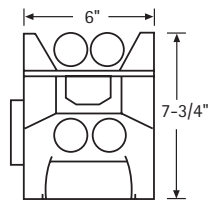
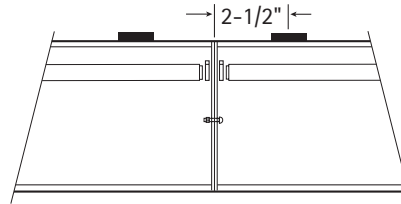
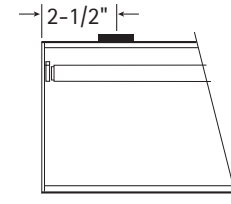


SECTIONS


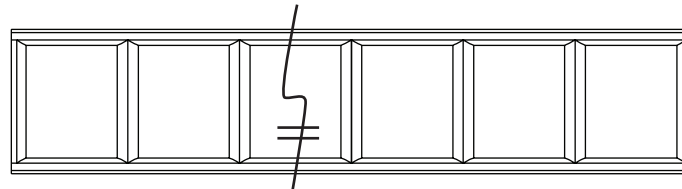
Cross Section

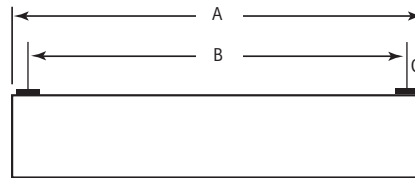
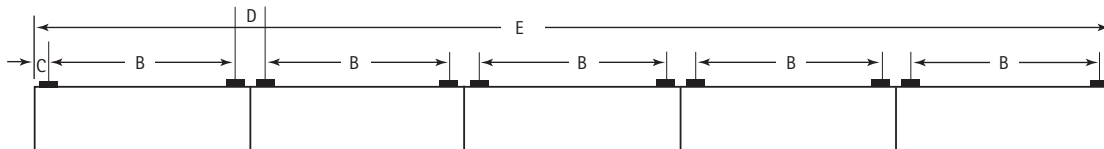
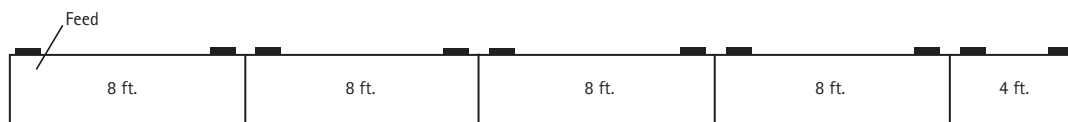


Connection Section



End Section

BOTTOM VIEW

 Single
 11 Cells Per 4' Housing (LD Shown)

SINGLE MOUNTING (TYPICAL)

ROW MOUNTING

FACTORY STANDARD (TYPICAL ROW)

DATA CHART

Nominal Length	Weight	A	B	C	D	E
4'	22 lbs.	48"	43"	2 1/2"	5"	240"
8'	35 lbs.	96"	91"	2 1/2"	5"	480"

