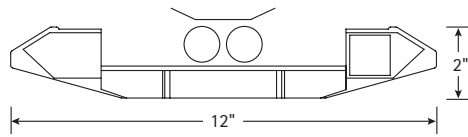
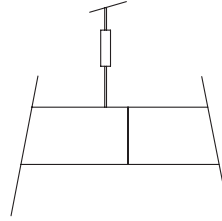


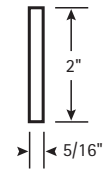
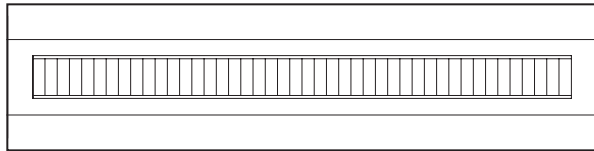
SECTIONS


Cross Section

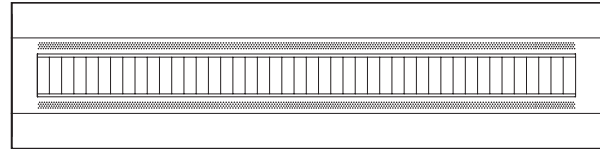


Connection Section

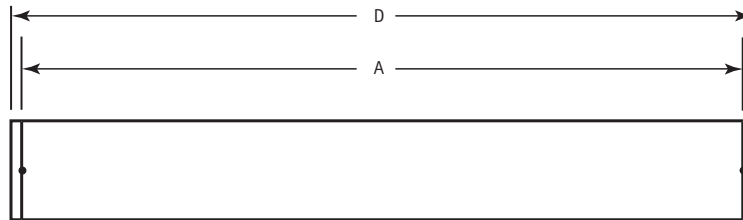
End Cap Options


BOTTOM VIEW


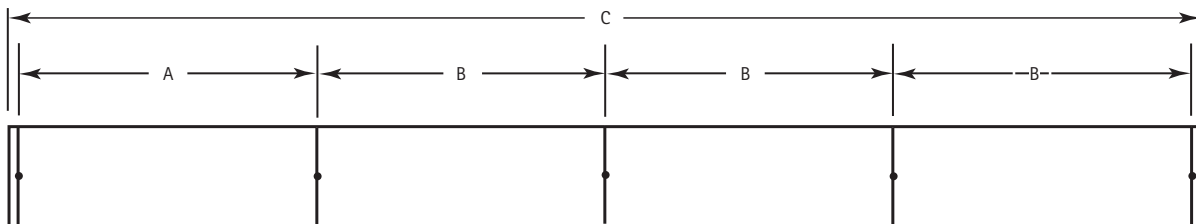
Solid Bottom



Perforated Bottom

SINGLE MOUNTING


4, 8, 12 ft. Single

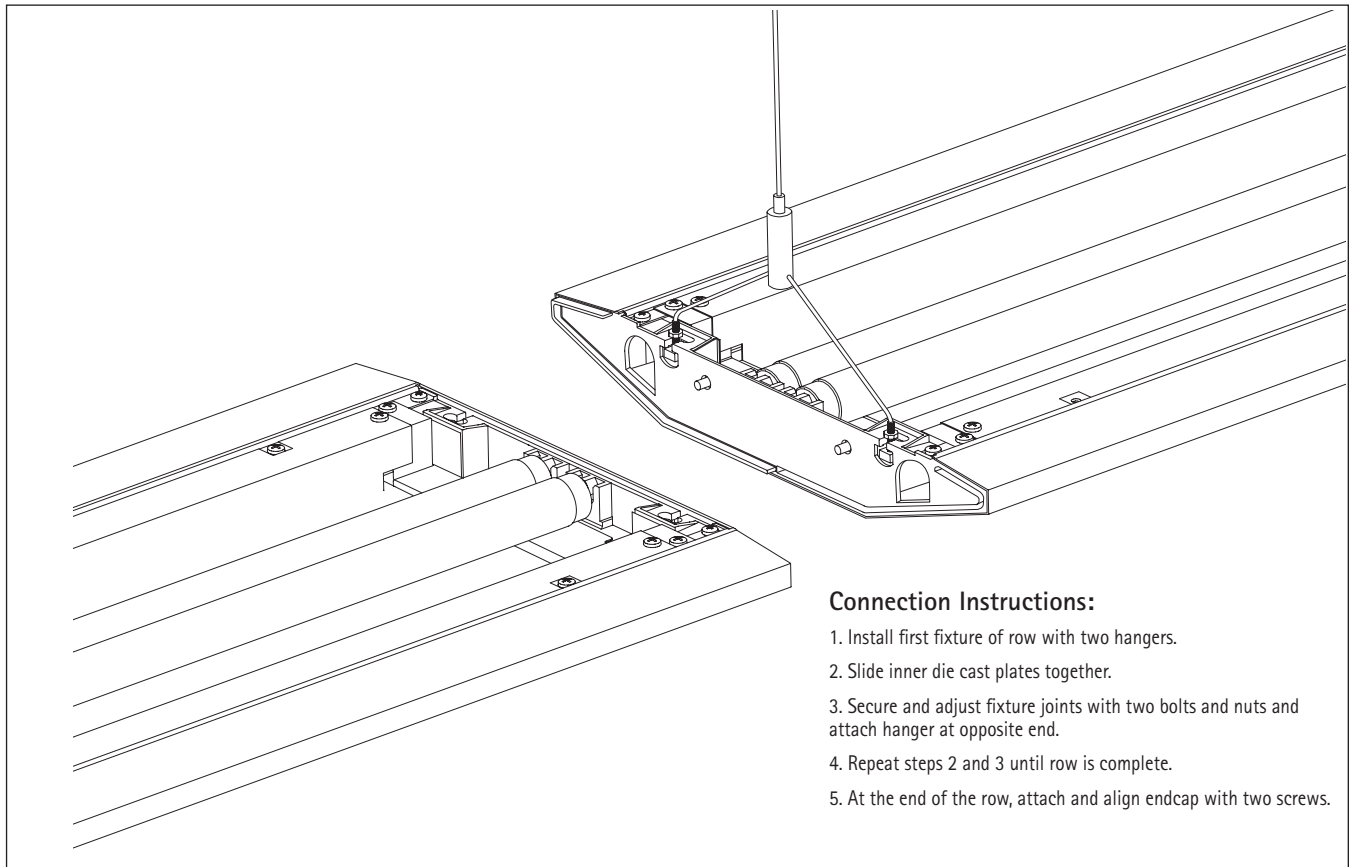
ROW MOUNTING


4, 8, 12 ft. Rows

DATA CHART

Nominal Length	Approx. Weight		A	B	C	D
	1-lamp	2-lamp				
4'	17 lbs.	17 lbs.	47 1/4"	48"	192 5/8"	48 5/8"
8'	28 lbs.	28 lbs.	95 1/4"	96"	384 5/8"	96 5/8"
12	40 lbs.	40 lbs.	143 1/4"	144"	576 5/8"	144 5/8"

Note: Suspension data is computed using the standard aircraft cable assembly. The use of rigid stems will yield different data. Please consult factory for stem data.



Suspension Instructions:

1. Set bottom nut to desired fixture height.
2. Adjust upper nut for a minimum of 3/8" between upper and lower nuts.
3. Slide cable hanger into hanger slot.
4. Secure and tighten upper nut.

