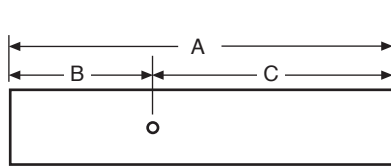
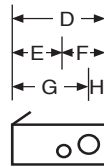


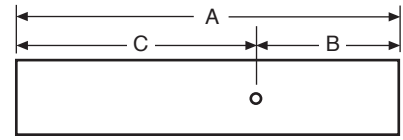
DIMENSIONS



BOTTOM VIEW
(from bottom of Cove)



SIDE VIEW



BACK VIEW
(from back of Cove)

DATA CHART

Nominal Length	Weight	A	B	C	D	E	F	G	H
2'	7 lbs	24"	10 ¹ / ₂ "	13 ¹ / ₂ "	7 ⁵ / ₁₆ "	4 ³ / ₈ "	2 ¹⁵ / ₁₆ "	6 ¹ / ₁₆ "	1 ¹ / ₄ "
3'	9 ¹ / ₄ lbs	36"	16 ¹ / ₂ "	19 ¹ / ₂ "	7 ⁵ / ₁₆ "	4 ³ / ₈ "	2 ¹⁵ / ₁₆ "	6 ¹ / ₁₆ "	1 ¹ / ₄ "
4'	11 ¹ / ₂ lbs	48"	22 ¹ / ₂ "	25 ¹ / ₂ "	7 ⁵ / ₁₆ "	4 ³ / ₈ "	2 ¹⁵ / ₁₆ "	6 ¹ / ₁₆ "	1 ¹ / ₄ "
8'	23 lbs	96"	46 ¹ / ₂ "	49 ¹ / ₂ "	7 ⁵ / ₁₆ "	4 ³ / ₈ "	2 ¹⁵ / ₁₆ "	6 ¹ / ₁₆ "	1 ¹ / ₄ "
6'	18 ¹ / ₂ lbs	72"	34 ¹ / ₂ "	37 ¹ / ₂ "	7 ⁵ / ₁₆ "	4 ³ / ₈ "	2 ¹⁵ / ₁₆ "	6 ¹ / ₁₆ "	1 ¹ / ₄ "

Note: Weights include electronic ballasts.

INSTALLATION INSTRUCTIONS

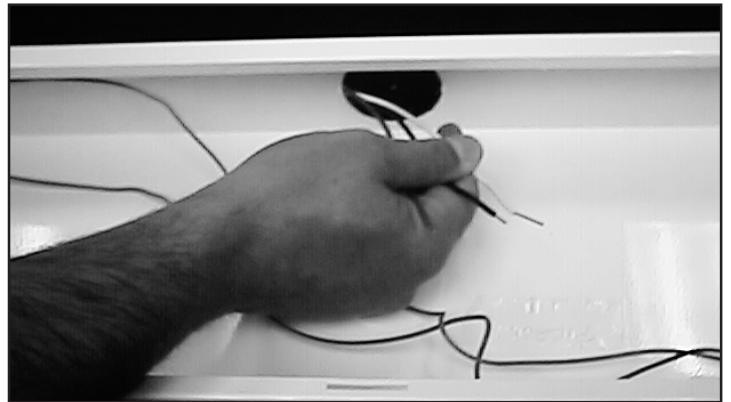
Step 1

Remove reflector. The reflector is secured on one side by tabs which engage slots in the housing as shown and a snap-in detail along the opposite side.



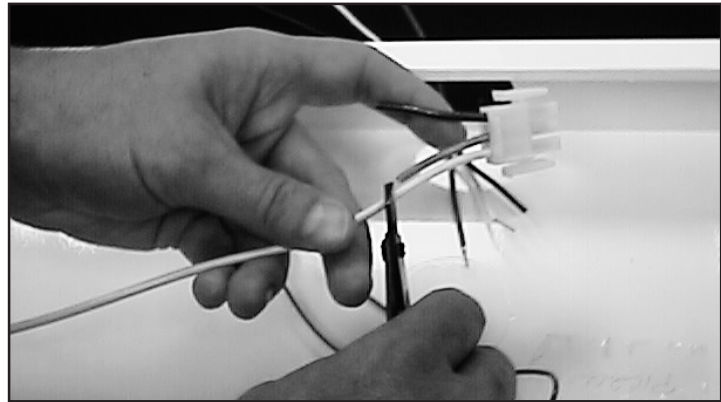
Step 2

Bring AC feed into housing. Knockouts are provided on both ends of the fixture, on the bottom of the fixture and in the back. See Data Chart for knockout dimensions.



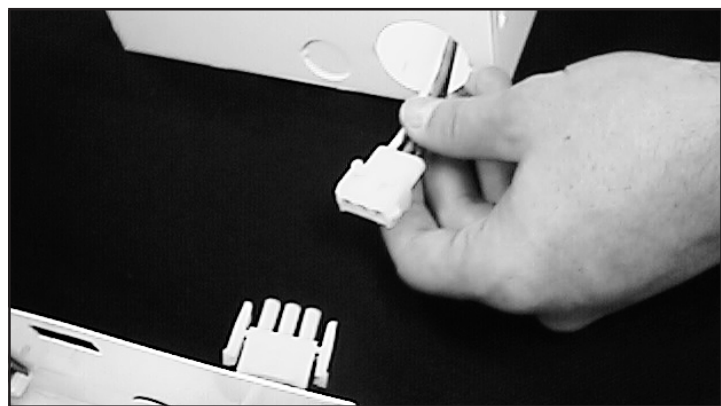
Step 3

Continuous row fixtures are equipped with in-row-wiring which has a quick-disconnect plug on one end and a receptacle on the other. At the feed fixture, cut off plug or receptacle as appropriate and connect AC feed wires in accordance with code requirements.



Step 4

In continuous row applications, remove 1¹/₂" knockout at opposite end of fixture and feed quick-disconnect plug through hole. Plug can be mated with the receptacle on the adjoining fixture for through wiring. Once completed, reinstall the reflector.



Step 5

Bend over tabs are provided to secure end-to-end fixtures together. Simply push one tab through the opening and flush against the inside of the adjacent fixture so the tab completes an arc of 180°. Repeat this process with the adjacent tab from the opposite side of the joint.

