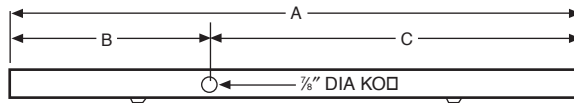


TECHNICAL INSTALLATION DATA

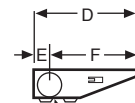
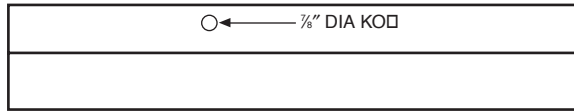
PIC, COVELIGHT, T5
6¹/₄" x 1⁷/₈"

DIMENSIONS

BACK VIEW
(from back of Cove)



BOTTOM VIEW
(from bottom of Cove)



1¹/₂" DIA KO
SIDE VIEW

DATA CHART

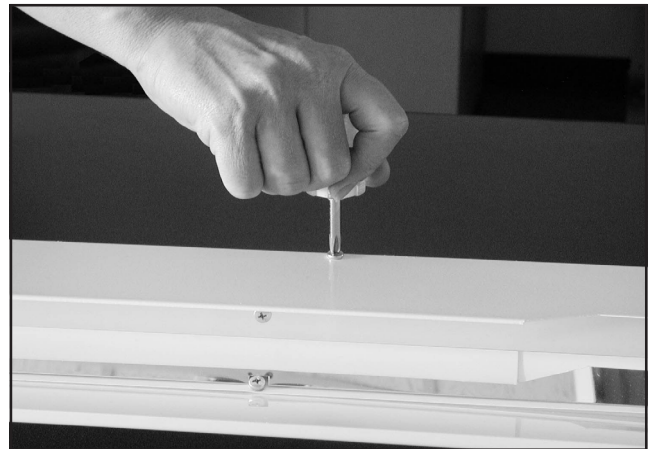
Nominal Length	Weight	A	B	C	D	E	F
2'	4 lbs	22 ¹¹ / ₁₆ "	2 ¹⁵ / ₁₆ "	19 ³ / ₄ "	6 ¹ / ₄ "	1 ⁵ / ₁₆ "	5 ⁵ / ₁₆ "
3'	6 lbs	34 ¹ / ₂ "	12"	22 ¹ / ₂ "	6 ¹ / ₄ "	1 ⁵ / ₁₆ "	5 ⁵ / ₁₆ "
4'	8 lbs	46 ⁵ / ₁₆ "	23 ⁵ / ₃₂ "	23 ⁵ / ₃₂ "	6 ¹ / ₄ "	1 ⁵ / ₁₆ "	5 ⁵ / ₁₆ "
6'	12 lbs	68 ³ / ₄ "	22 ⁷ / ₁₆ "	46 ⁵ / ₁₆ "	6 ¹ / ₄ "	1 ⁵ / ₁₆ "	5 ⁵ / ₁₆ "
8'	16 lbs	92 ⁷ / ₁₆ "	23 ¹ / ₈ "	69 ⁵ / ₁₆ "	6 ¹ / ₄ "	1 ⁵ / ₁₆ "	5 ⁵ / ₁₆ "

Note: Weights include electronic ballasts.

INSTALLATION INSTRUCTIONS

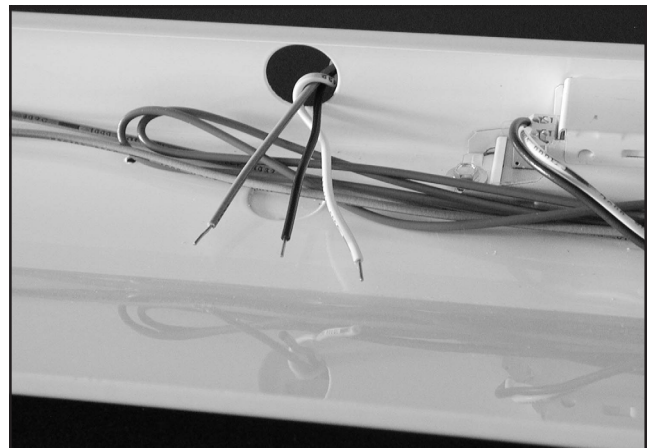
Step 1

Remove upper reflector. The reflector is secured with screws in the fixture housing.



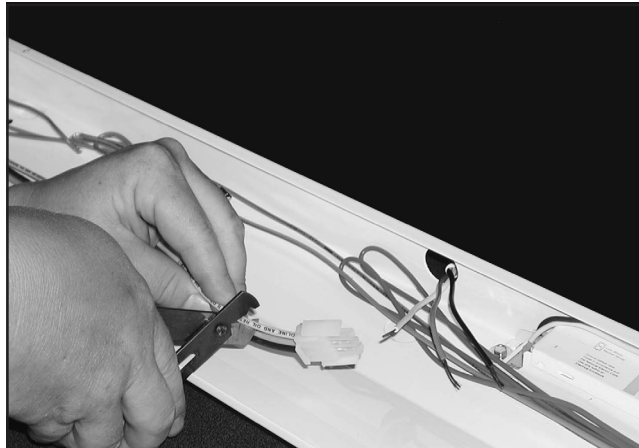
Step 2

Bring AC feed into housing. Knockouts are provided on both ends of the fixture, on the bottom of the fixture, and in the back. See above for knockout dimensions.



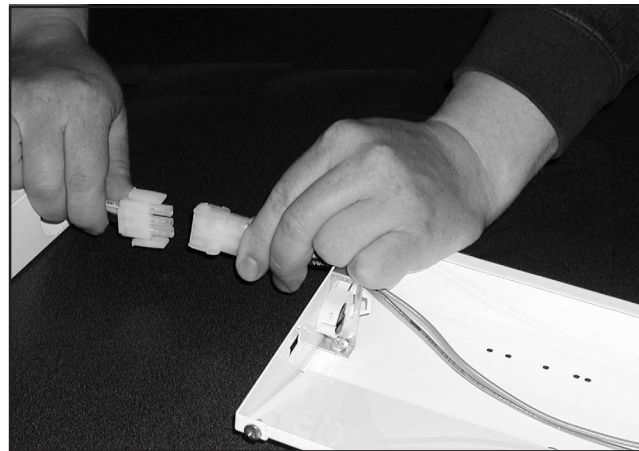
Step 3

Continuous row fixtures are equipped with in-row-wiring which has a quick-disconnect plug on one end and a receptacle on the other. At the feed fixture, cut off plug or receptacle as appropriate and connect AC feed wires in accordance with code requirements.



Step 4

In continuous row applications, remove 1¹/₂" knockout at opposite end of fixture and feed quick-disconnect plug through hole. Plug can be mated with the receptacle on the adjoining fixture for through wiring. Once completed, reinstall the reflector.



Step 5

Bend over tabs are provided to secure end-to-end fixtures together. Simply push one tab through the opening and flush against the inside of the adjacent fixture so the tab completes an arc of 180°. Repeat this process with the adjacent tab from the opposite side of the joint.

