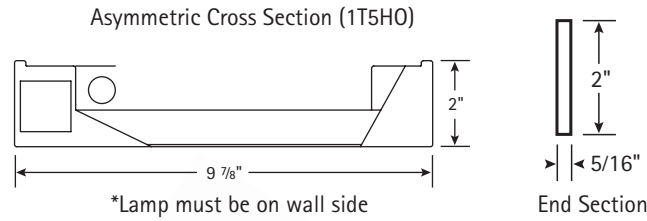


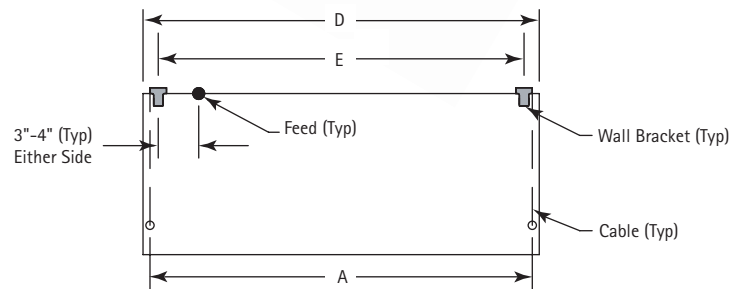
SECTIONS



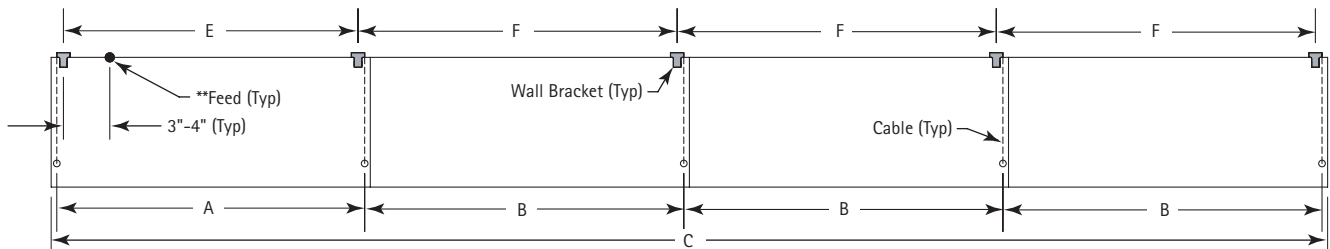
BOTTOM VIEW



SINGLE MOUNTING



ROW MOUNTING

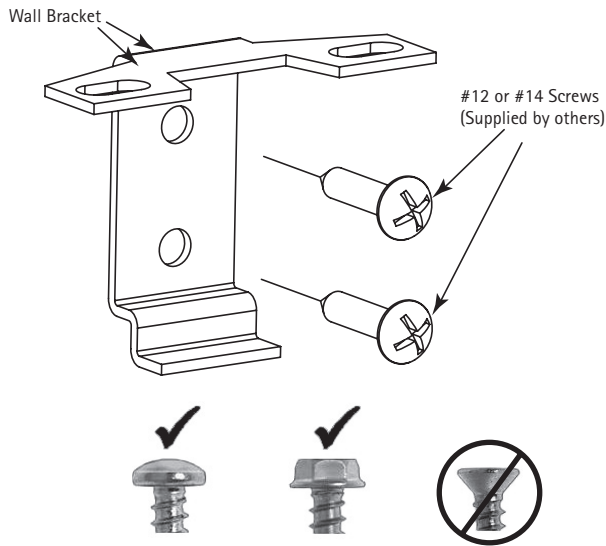


**Feed location is typical for any fixture within row. Reference job drawing for job-specific locations.

DATA CHART

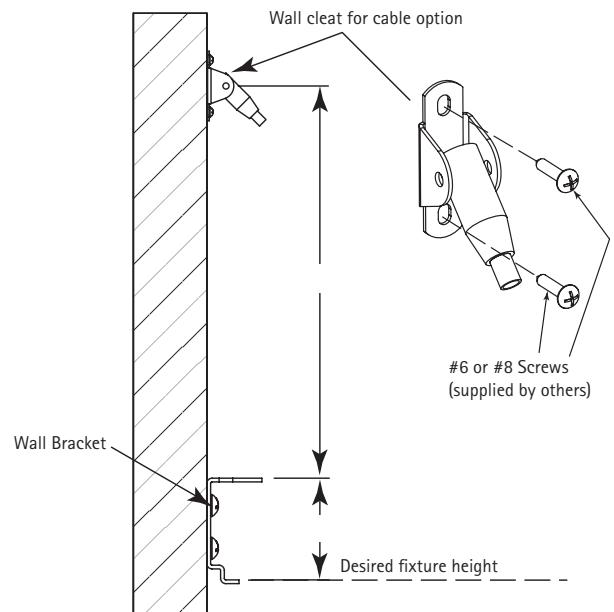
Nominal Length	Approx. Weight			A	B	C	D	E	F
	1-lamp	2-lamp	3-lamp						
4'	17 lbs.	17 lbs.	19 lbs.	47 1/4"	48"	192 5/8"	48 5/8"	45 1/4"	48"
8'	28 lbs.	28 lbs.	31 lbs.	95 1/4"	96"	384 5/8"	96 5/8"	93 1/4"	96"
12'	40 lbs.	40 lbs.	43 lbs.	143 1/4"	144"	576 5/8"	144 5/8"	141 1/4"	144"

Step 1



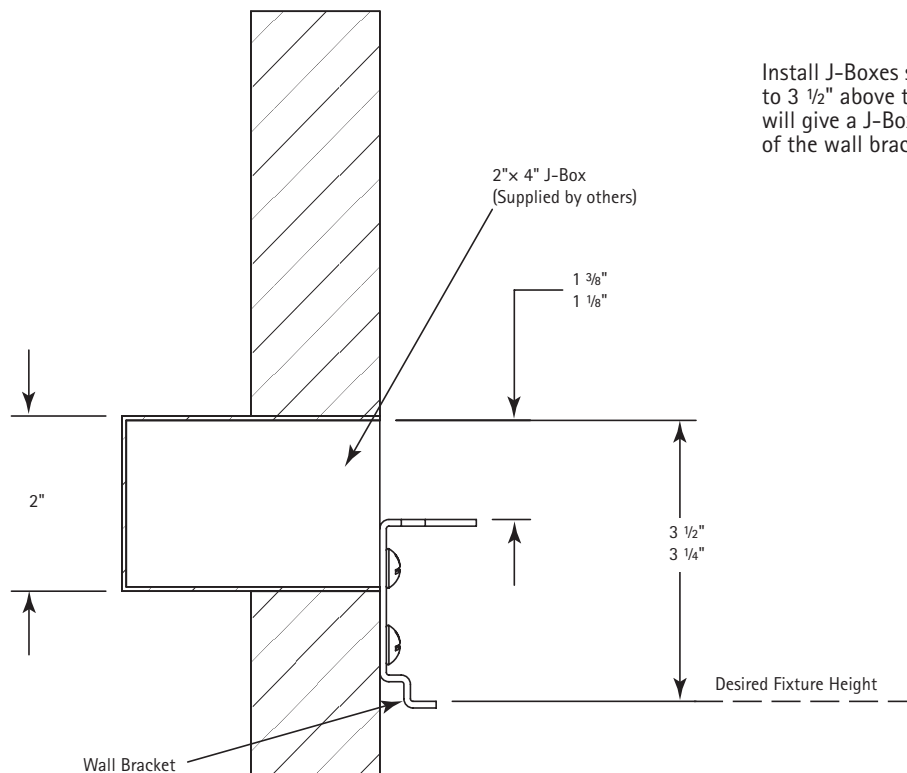
Install wall brackets at the desired elevation and at intervals per Page 1. Only use screws with flat contact faces. Taper-head screws will cause brackets to shift during installation. Bracket elevation should be accurately controlled to ensure level rows.

Step 2

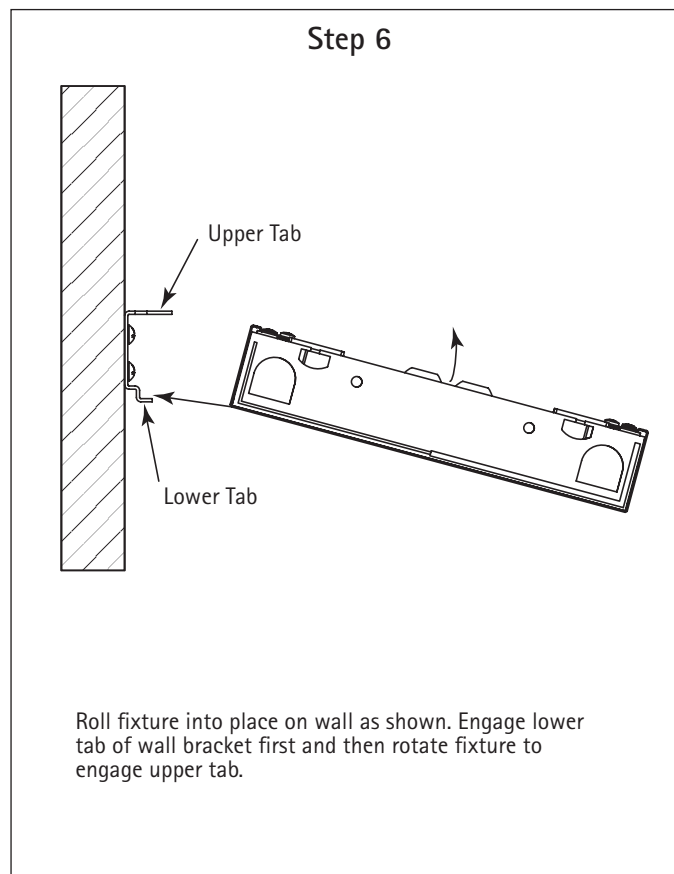
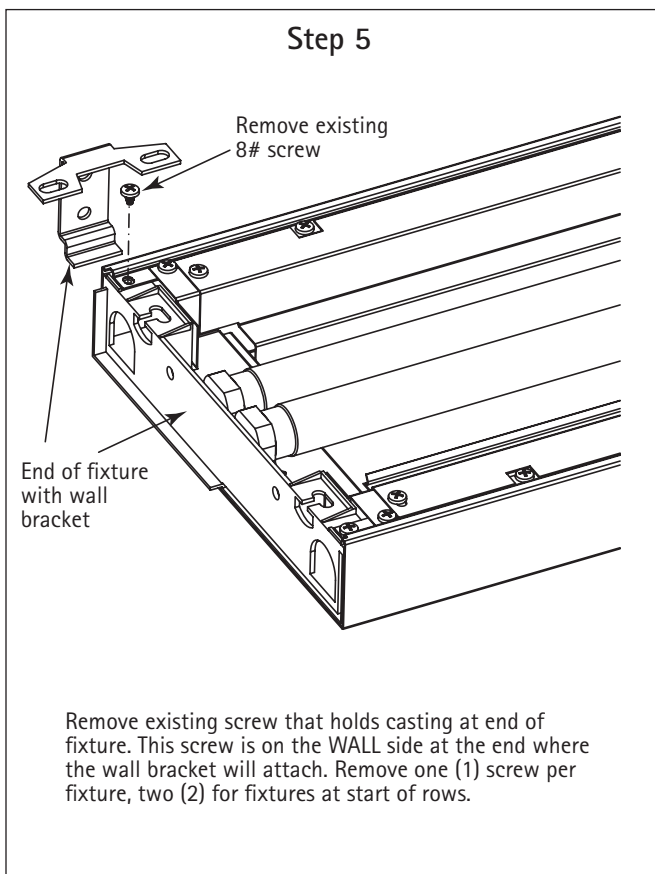
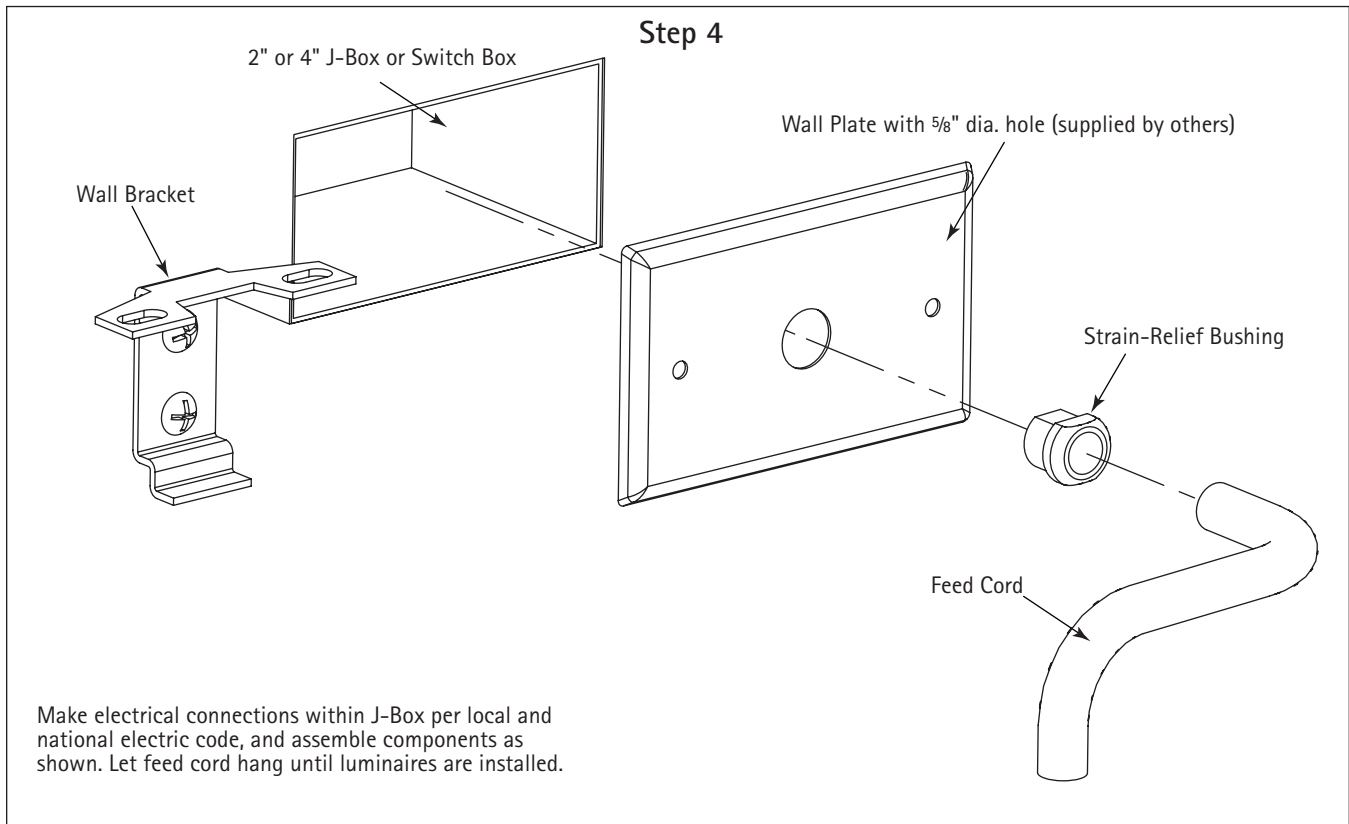


Install optional wall cleats, if provided, using two (2) #4 screws (supplied by others) at the height shown above and at the intervals per Page 1.

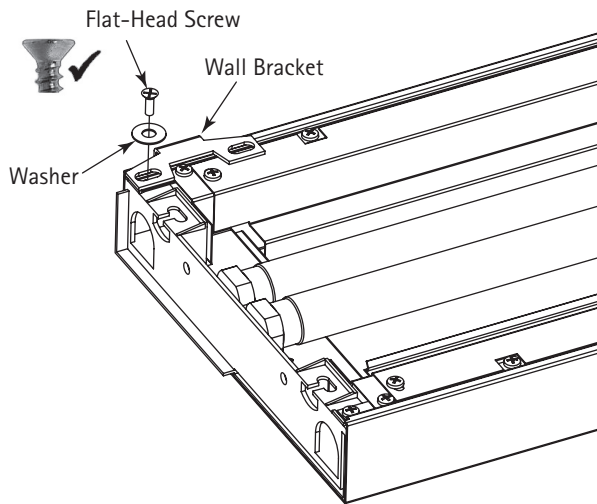
Step 3



Install J-Boxes so that the top of the openings are $3 \frac{1}{4}$ " to $3 \frac{1}{2}$ " above the intended height of the fixture. This will give a J-Box opening of $1 \frac{1}{8}$ " to $1 \frac{3}{8}$ " above the top of the wall bracket/fixture.

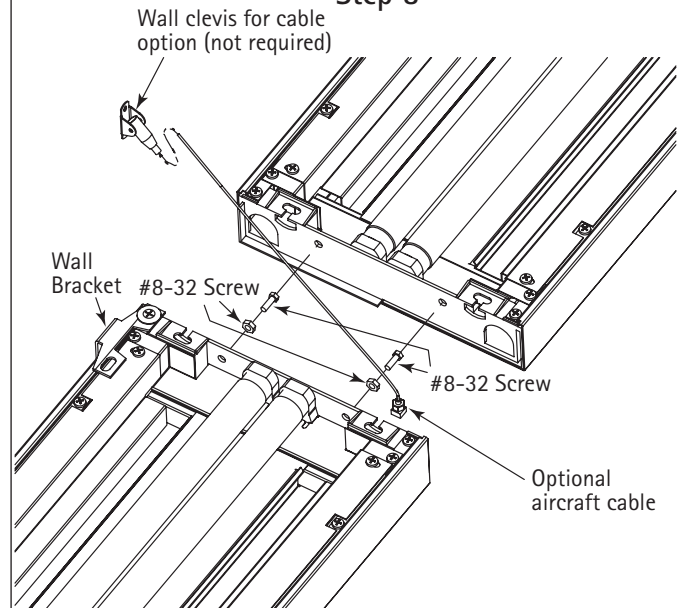


Step 7



Install washer and flat-head screw supplied with kit. Only one (1) screw can be used per bracket. Verify that the attachment screw goes into the casting. This screw should be left loose until after leveling fixture.

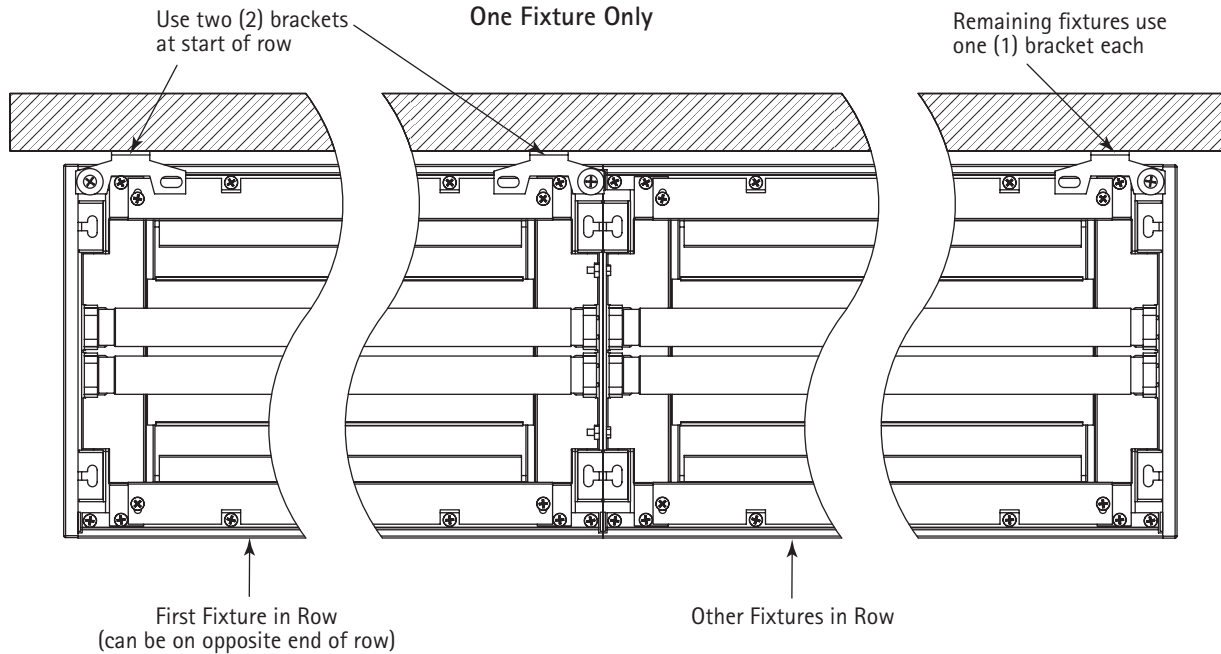
Step 8



Connect row mounted fixtures using the two (2) #8-32 machine screws and nuts provided. Install optional aircraft cable, if provided, as shown above. Cable should be on same fixture as the Wall Bracket

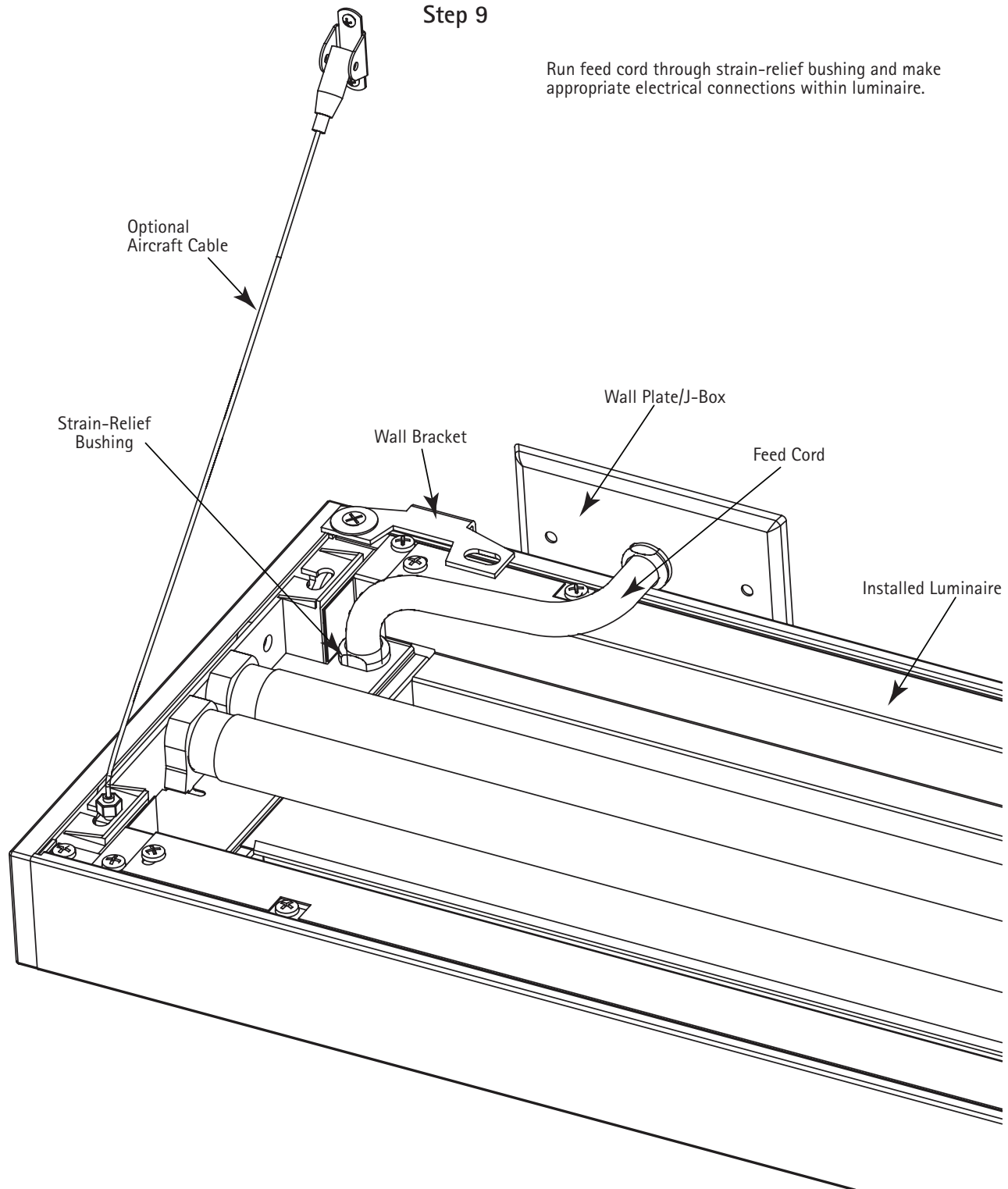
Top View After Step 8

Each Bracket Connects To One Fixture Only



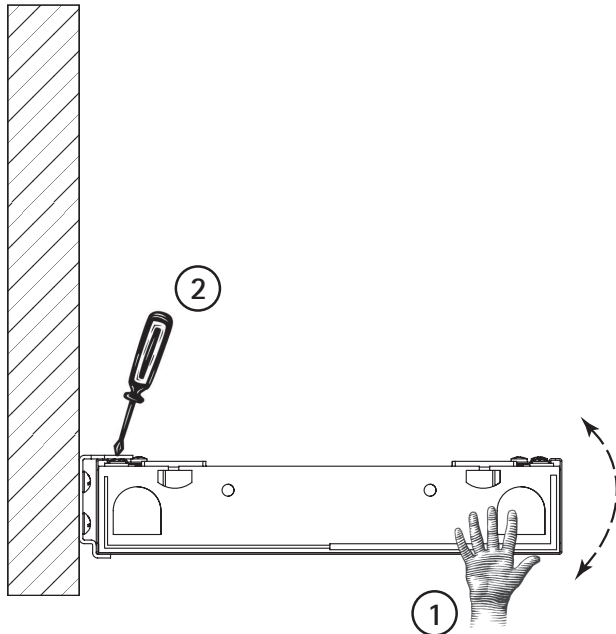
Step 9

Run feed cord through strain-relief bushing and make appropriate electrical connections within luminaire.



Step 10A

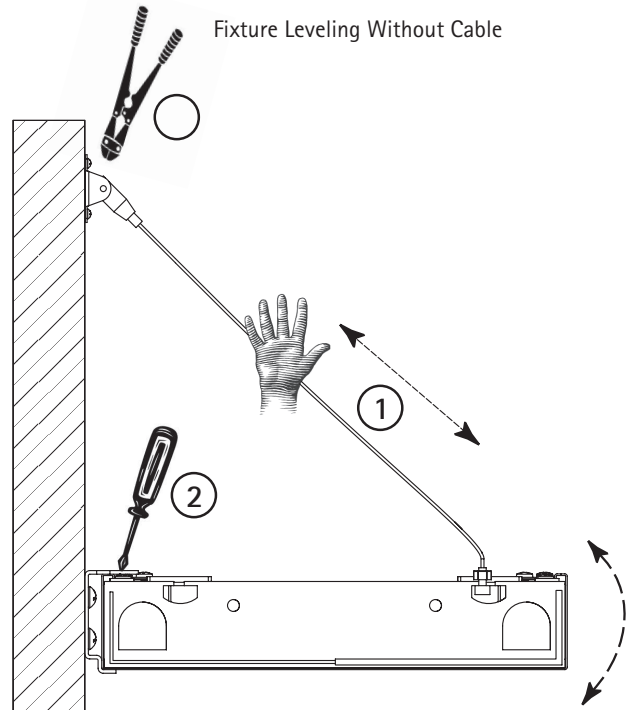
Fixture Leveling Without Cable



1. Move end of fixture by hand until level.
2. Tighten attachment screw (#8 Flat-Head) securely to hold fixture in position)

Step 10B

Fixture Leveling Without Cable



1. Adjust length of cable by hand until fixture is level.
2. Tighten attachment screw (#8 Flat-Head) to a snug fit. Over-tightening may shift fixture.
3. Trim off excess aircraft cable extending through wall cleat.