

# EN - APCS

## Enhance For A+CLASS

### FEATURES

- A+CLASS™ Whiteboard Lighting
- A+CLASS™ compatible
- Focuses attention on whiteboard, teaching surface or wall
- Wide light distribution provides uniform illumination at up to 8' spacings
- Model with unique kicker reflector directs majority of light on ceiling line
- Ideal for education
- Choice of linear kicker reflector or cross baffle
- Anodized low iridescent aluminum reflector
- High efficiency
- In-row quick-connect wiring provided standard for continuous rows
- Modular mounting points for convenient hanging locations
- UL Listed 1598, damp label available on most models
- CUL US



**NEW**

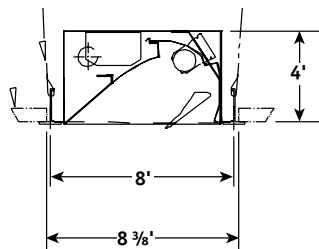
RECESSED

### ORDERING INFORMATION A+CLASS™ EN LIGHTING

<b>EN</b>		<b>1</b>			<b>LD</b>				
<b>MODEL</b>	<b>SIZE</b>	<b>NO. OF LAMPS IN CROSS SECTION</b>			<b>LOUVER FINISH</b>	<b>APERTURE</b>			<b>VOLTAGE</b>
EN Enhance High Performance Lighting	81 8" × 1' 82 8" × 2' 84 8" × 4'	1 One			LD Low Iridescent Semi-Specular Louver (Std.)	K Kicker B Cross Baffle			U 120V-277V 120 120V 277 277V

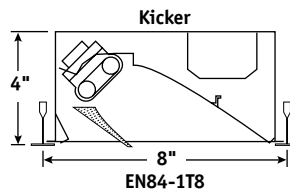
To order A+CLASS™ controls: see page APCS.

<b>LAMP TYPE</b>	<b>MOUNTING METHOD</b>	<b>BALLAST</b>	<b>OPTIONS</b>
T8 T8 Lamp 18TT 18 Watt, Twin Tube Compact Fluorescent 40TT 40 Watt, Twin Tube Compact Fluorescent 50TT 50 Watt, Twin Tube Compact Fluorescent	G Grid F Flange (Flange kit) SG Slot Grid SM Surface Mount WM Wall Mount	EP Electronic, Programmed Start (Optional for T8, required for A+CLASS) EPTT Electronic Twin Tube, Programmed Start Unless specified, Alera will use fewest ballasts possible.	PWFK1 Flange Kit, 1' Single Unit PWFK2 Flange Kit, 2' Single Unit PWFK4 Flange Kit, 4' Single Unit GLR Fast Blow Fuse GMF Slow Blow Fuse CSA UL listed or CSA certified for Canada DL Damp Label (Available on most models)

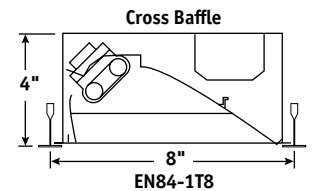


EN84-1T8 Kicker

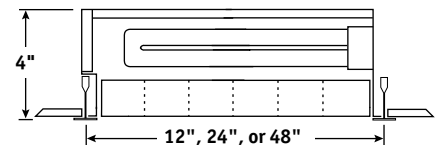
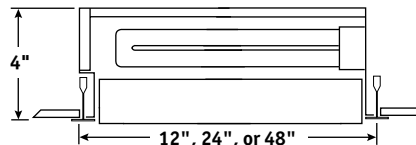
### CROSS SECTIONS



EN84-1T8



EN84-1T8



### PRODUCT AVAILABILITY

SIZE	NO. OF LAMPS	LAMP TYPE	CROSS BAFFLE CONFIGURATIONS
8" × 1'	1	18TT	1 × 6 (6)
8" × 2'	1	17, 40TT, 50TT	1 × 9 (9)
8" × 4'	1	32	1 × 18 (18)
	2	40TT, 50TT	1 × 18 (18)

If desired lamp or louver configuration is not shown above, contact your local Alera Lighting representative.

Patent Pending.

