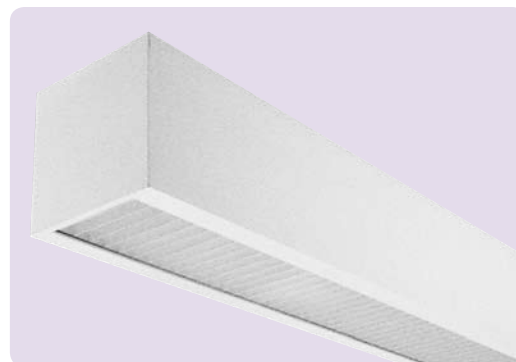


FEATURES

- Choice of direct, indirect, or direct/indirect lighting with a variety of shielding options
- Optional asymmetric reflector available for wall wash applications
- Cable, surface, pendant, or wall mount
- Controls compatible
- Standard finish is matte white, other optional color finishes are available
- UL listed 1598. Damp label available on most models



ORDERING INFORMATION

MODEL	LAMP PROFILE & DISTRIBUTION	LAMP TYPE	SUSPENSION LENGTH	VOLTAGE	FINISH	OPTIONS
IB66 IB66	1U 1-Lamp Uplight 2U 2-Lamp Uplight 1AU 1-Lamp Asymmetric Uplight 1D 1-Lamp Downlight 2D 2-Lamp Downlight 1AD 1-Lamp Asymmetric Downlight 1UD 1-Lamp Uplight & Downlight (WM only) 2UD 2-Lamp Uplight & Downlight (CM/PM only) 1U1D 1-Lamp Uplight, 1-Lamp Downlight 1U2D 1-Lamp Uplight, 2-Lamp Downlight 2U1D 2-Lamp Uplight, 1-Lamp Downlight 2U2D 2-Lamp Uplight, 2-Lamp Downlight	T8 T8	48 48" 96 96" Not applicable for surface or wall mount. Other lengths available on request.	U 120V-277V 120 120V 277 277V 347 347V	MW Matte White (Std.) ZT ZET Metallic Silver See page 185 for other color selections.	DC Dust Cover LR Left/Right Switching (2-Lamp only) ² UB Upper/Lower Switching (2-Lamp only) ² EL One Emergency Battery Pack ^{3,4} EMC One Emergency Circuit ^{4,5} NL Night Light Circuit ^{4,5} GLR Fast Blow Fuse GMF Slow Blow Fuse TBAR T-Bar Mounting CSA UL listed or CSA certified for Canada DL Damp Label (Available on most models)
ROW LENGTH	MOUNTING METHOD	SHIELDING	BALLAST			
4 4' Single 8 8' Single — Indicate row length over 8' in 4' increments Note: Rows over 8' will be configured by Alera. Example: 16' will be (2) 8'. Alternate configurations: contact factory.	CM Adjustable Aircraft Cable PM Pendant Mount SM Surface Mount WM Wall Mount See pages 180-181 for other hanging methods.	LD Low Iridescent Semi-Specular Louver ¹ LS Low Iridescent Specular Louver ¹ AL ½" x ½" Aluminum Louver ¹ A12 Pattern 12 Acrylic Lens ¹ A19 Pattern 19 Acrylic Lens ¹ CA Clear Acrylic Lens (No pattern) OA Opal Acrylic Lens WCB White Cross Baffle ¹ U No Shielding (Uplight)	E Electronic, Instant Start (Std. for T8) EP Electronic, Programmed Start (Optional for T8) ED Electronic, Dimming (Must specify) ESD Electronic, Step Dimming Unless specified, Alera will use fewest ballasts possible.			

¹ For downlight component only.

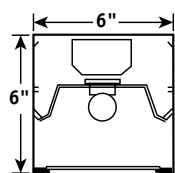
² LR requires 2 lamps in cross section. UB assumes 1 circuit up, 1 circuit down.

³ Specify voltage. For additional, specify quantity before nomenclature (Example: 2EL120).

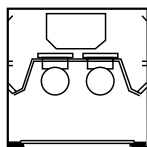
⁴ Not available with all configurations; some limitations apply. Contact factory for details.

⁵ One extra feed drop per row with through wiring. (Standard is one 4ft lamp per circuit.)

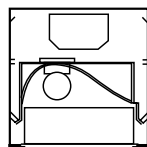
CROSS SECTIONS



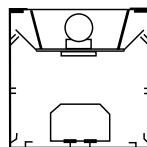
IB66-1D



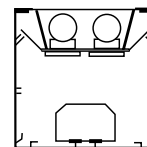
IB66-2D



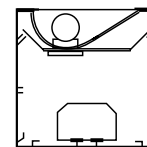
IB66-1AD



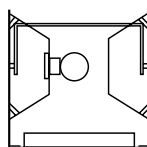
IB66-1U



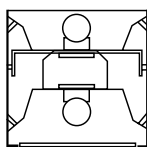
IB66-2U



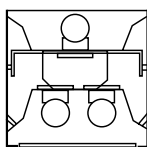
IB66-1AU



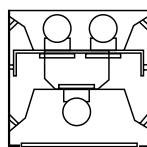
IB66-1UD (WM only)



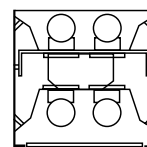
IB66-1U1D



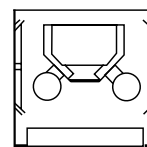
IB66-1U2D



IB66-2U1D



IB66-2U2D



IB66-2UD (CM/PM only)