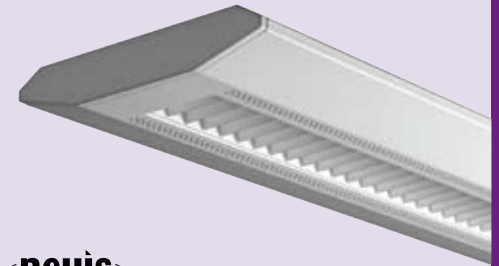


FEATURES

- Unique, interesting shape tapers down to $\frac{13}{32}$ " for a minimalist, floating appearance
- Heavy 20-gauge construction provides excellent housing rigidity; patented die cast aluminum joiners ensure excellent row integrity (Patent# 6,796,676B2)
- One, two, or three T8, T5, or T5HO lamps in cross section
- Optional perforated housing
- Flat end caps standard ($\frac{5}{16}$ "
- Wide selection of flush or regressed shielding media
- Integral ballast; remote ballasting not required
- Control compatible for daylight harvesting, occupancy sensors, or dimming systems (small case size ballasts required)
- UL listed 1598. Damp label available on most models



<nevis>

ORDERING INFORMATION

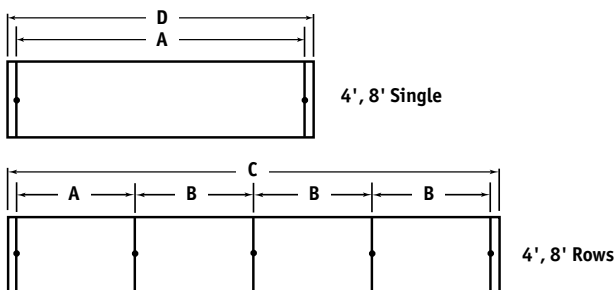
NVS		-		-		-		-		CM		-		-		-		-		-	
MODEL		HOUSING TYPE				ADJUSTABLE CABLE LENGTH		VOLTAGE		FINISH		OPTIONS									
NVS Nevis		Blank Solid (Std.) PFST Perforated Strip DPST Diamond Pattern Perforated Strip				48 48" 96 96" 144 144" Other lengths available on request.		U 120V-277V 120 120V 277 277V 347 347V		MW Matte White (Std.) GW Gloss White ZT ZET Metallic Silver		DC Dust Cover (T8 only) LR Left/Right Switching (2-Lamp only) IBOB Inboard/Outboard Switching (3-Lamp only) EL One Emergency Battery Pack ^{1,2} EMC One Emergency Circuit ^{2,3} NL Night Light Circuit ^{2,3} GLR Fast Blow Fuse GMF Slow Blow Fuse TBAR T-Bar Mounting CSA UL listed or CSA certified for Canada DL Damp Label (Available on most models)									
ROW LENGTH		LAMP TYPE & PROFILE		MOUNTING METHOD		SHIELDING		BALLAST													
4 4' Single 8 8' Single — Indicate row length over 8' in 4' increments Note: Rows over 8' will be configured by Alera. Example: 16' will be (2) 8'. Alternate configurations: contact factory.		1T5 1 T5 Lamp 2T5 2 T5 Lamps 3T5 3 T5 Lamps 1T5HO 1 T5HO Lamp 2T5HO 2 T5HO Lamps 3T5HO 3 T5HO Lamps 1T8 1 T8 Lamp 2T8 2 T8 Lamps 3T8 3 T8 Lamps		CM Adjustable Aircraft Cable Mount (Std.)		WCB White Cross Baffle RPF Regressed Perforated FPF Flat Perforated OA Opal Acrylic Lens A12 Pattern 12 Acrylic Lens LD Low Iridescent Semi-Specular Louver		E Electronic, Instant Start (Std. for T8) EP Electronic, Programmed Start (Std. for T5 & T5HO, optional for T8) ED Electronic, Dimming (Must specify) ESD Electronic, Step Dimming Unless specified, Alera will use fewest ballasts possible.													

¹Specify voltage. For additional, specify quantity before nomenclature (Example: 2EL120).

²Not available with all configurations; some limitations apply. Contact factory for details.

³One extra feed drop per row with through wiring. (Standard is one 4ft lamp per circuit.)

MOUNTING INFORMATION

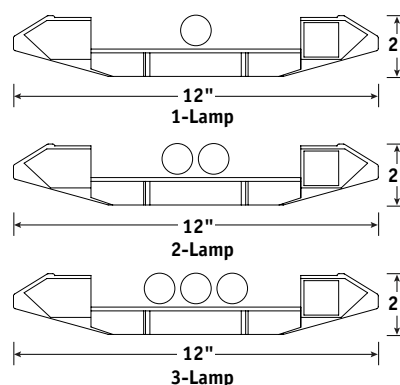


DATA CHART

NOMINAL LENGTH	APPROX. WEIGHT (LBS.)			A	B	C	D
	1-LAMP	2-LAMP	3-LAMP				
4'	17	17	19	47 $\frac{1}{4}$ "	48"	192 $\frac{5}{8}$ "	48 $\frac{5}{8}$ "
8'	28	28	31	95 $\frac{1}{4}$ "	96"	384 $\frac{1}{4}$ "	96 $\frac{5}{8}$ "

Note: Suspension data is computed using the standard aircraft cable assembly. The use of rigid stems will yield different data. Please consult factory for stem data. Calculations include flat end caps.

CROSS SECTIONS



Name:	NVS-3T8-PERF-OA-E
Test #:	14259
Efficiency:	93.9%
LER:	83

Definitions on page 184.