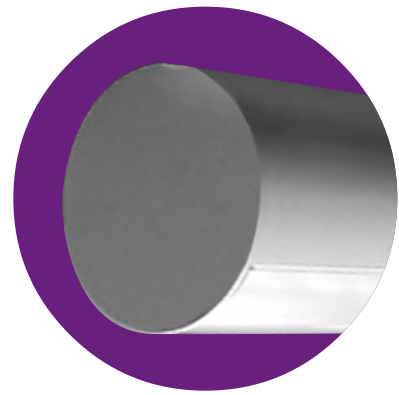


IT6

Features

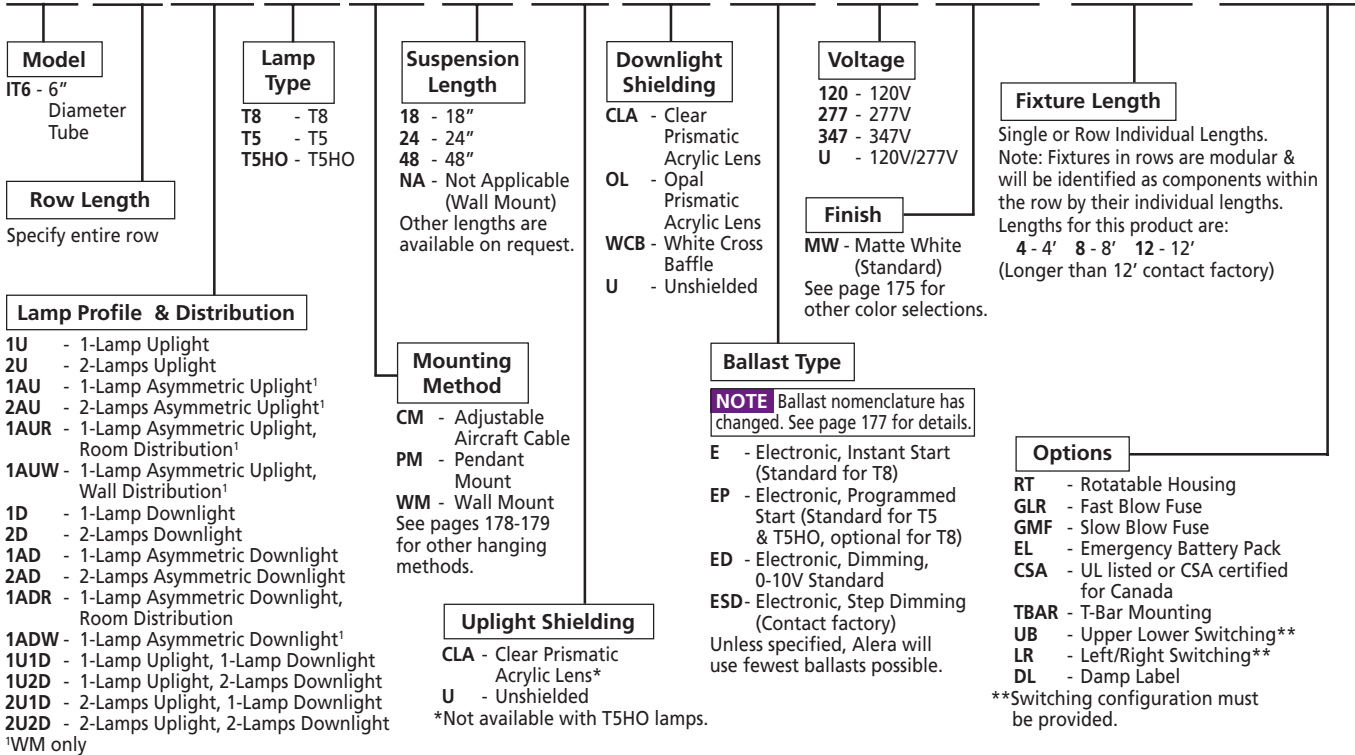
- 6" tube
- Fully extruded aluminum housing and aluminum end caps ensure the entire unit is rigid and straight
- Housing end caps are welded which results in a seamless appearance
- A variety of shielding options make the system usable for almost any application
- All internal components are painted gloss white for maximum photometric performance
- Standard finish is powder coat matte white. Other optional color finishes are available
- UL listed 1598. Optional CSA label available
- Damp label available



Ordering Information

Example: IT6-24-1DT8-CM18-CLA-EU-MW (for 24' row)

IT6-



Cross Sections

