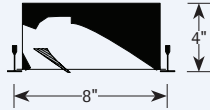




### FEATURES

- A+CLASS™ compatible for recessed whiteboard lighting
- Provides light for whiteboards, teaching surfaces and walls
- Wall washing makes environment appear larger and brighter
- Mount on walls to wash ceiling or floor
- Wide light distribution provides uniform illumination at up to 8' spacings
- Model with unique kicker reflector directs majority of light on wall up to ceiling line
- Ideal for schools
- Used at ends and sides of parabolic rows
- Anodized low iridescent aluminum reflector
- White powder coat finish painted after fabrication
- RAL colors available
- A+CLASS™ system includes lighting controls, switches, and low voltage wiring
- See APCS submittal for more detail

### SHAPE AND DIMENSIONS



### PROJECT INFORMATION

Project Name	Type
Catalog No.	Date

### A+CLASS

Compatible with the A+CLASS™ energy management system for use as whiteboard lighting.

### CONSTRUCTION

- The luminaire housing is constructed of die formed code gauge cold rolled steel.
- The reflector assembly is constructed of anodized aluminum and is designed to present a clean uninterrupted reflecting surface.
- The kicker reflector is highly polished extruded aluminum and is not adjustable. The kicker reflector shields the lamp completely from room side and 9° from nadir on the wall side.
- Ballast is housed above front reflector and is totally accessible from below.

### FINISH

Painted parts are treated with a five-stage phosphate bonding process and finished with a high temperature baked enamel after fabrication. The reflector assembly is constructed of semi-specular low iridescent anodized aluminum (LD).

### CEILING COMPATIBILITY

The Enhance is available to fit most ceiling systems such as NEMA type G (lay-in), type F (overlapping flange), and type SG (Slot Grid). For type F applications, a type G fixture will be supplied along with a flange kit for the fixture to

fit in. The flange kit is assembled in the field and is wired directly into the ceiling structure. The flange kit should be installed before the fixture is installed. The G unit fits into a standard grid ceiling.

### INSTALLATION

For fast wiring connections without the necessity of opening fixture or wireway, an adapter plate is furnished with each 2' and 4' unit.

### LABELS AND ELECTRICAL

All units bear appropriate UL and CSA recessed fixture labels.

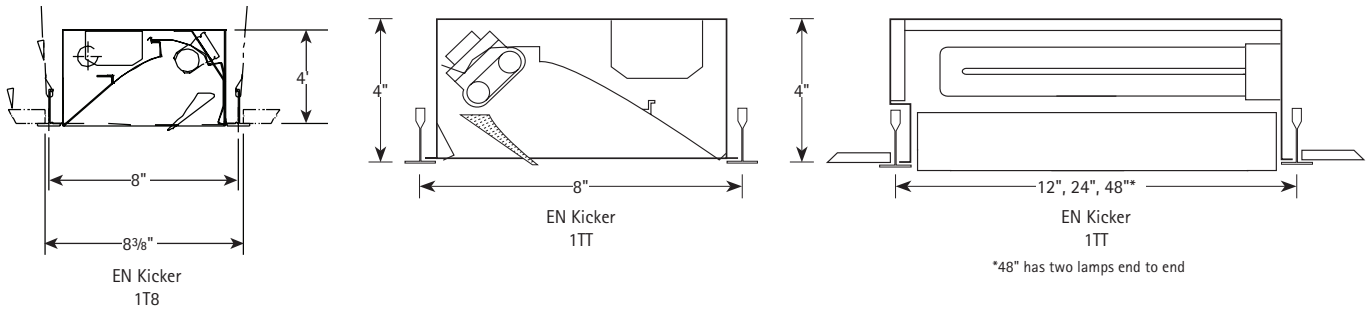
<b>Name:</b>	EN-1T8-LDK
<b>Test #:</b>	12559
<b>Efficiency:</b>	54.1%
<b>LER:</b>	33

### ORDERING INFORMATION

### EXAMPLE: EN84-1T8 G-LD K-EPU

EN	-	1	-	LD	-	K	-	-	-
MODEL		NO. OF LAMPS IN CROSS SECTION		LOUVER FINISH		APERTURE		VOLTAGE	OPTIONS
EN Enhance High Performance Lighting		1 One		LD Low Iridescent Semi-Specular Louver (Std.)		K Kicker		U 120V-277V 120 120V 277 277V	PWFK1 Flange Kit, 1' Single Unit PWFK2 Flange Kit, 2' Single Unit PWFK4 Flange Kit, 4' Single Unit GLR Fast Blow Fuse GMF Slow Blow Fuse CSA UL listed or CSA certified for Canada DL Damp Label (Available on most models)
To order A+CLASS™ controls: see page APCS.									
SIZE		LAMP TYPE		MOUNTING METHOD		BALLAST			
81 8" x 1'		T8 T8 Lamp		G Grid		EP Electronic, Programmed Start (Optional for T8, required for A+CLASS)			
82 8" x 2'		18TT 18 Watt, Twin Tube Compact Fluorescent		F Flange (Flange Kit)		EPTT Electronic Twin Tube, Programmed Start			
84 8" x 4'		40TT 40 Watt, Twin Tube Compact Fluorescent		SG Slot Grid		Unless specified, Alera will use fewest ballasts possible.			
		50TT 50 Watt, Twin Tube Compact Fluorescent		SM Surface Mount					
				WM Wall Mount					

## CROSS SECTION



## PHOTOMETRIC DATA

### LUMINAIRE DATA Test 12557

Luminaire	EN84-132G-LDK-OCT EN Architectural Recessed 8" x 48" 1-Lamp Linear Wallwash
Ballast	R1P32
Ballast Factor	0.95
Lamp	F032/41K
Lumens per Lamp	2900
Watts	39
Mounting	Recessed
Shielding Angle	0° = 90° 90° = 90°
Spacing Criterion	0° = N/A 90° = N/A
Luminous Opening in Feet	Length: 3.92 Width: 0.53 Height: 0.00

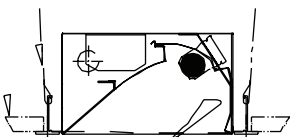
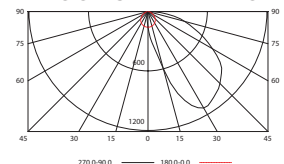
### AVG. LUMINANCE (Candela/Sq. M.)

Angle	90.0	135.0	180.0	225.0	270.0
0	808	808	808	1142	808
30	6718	5199	796	232	54
40	7237	6472	771	110	27
45	7517	6638	755	75	22
50	7786	6811	717	66	24
55	8012	7009	677	55	18
60	7792	7233	622	42	10
65	7625	7294	564	50	12
70	7362	6938	515	62	15
75	7627	6566	500	41	20
80	7907	6654	507	61	30
85	7550	6777	654	121	59

### COEFFICIENTS OF UTILIZATION (%)

RCR	80					70					50					0
	RW	70	50	30	10	70	50	30	10	50	30	10	0	0		
1	58	55	52	50	56	54	51	49	51	49	47	43	0	0		
2	52	47	42	39	50	46	42	38	44	40	37	34	0	0		
3	47	40	35	31	45	39	34	31	37	33	30	28	0	0		
4	42	35	29	25	41	34	29	25	33	28	25	23	0	0		
5	38	30	25	21	37	30	25	21	29	24	21	19	0	0		
6	35	27	22	18	34	26	21	18	25	21	17	16	0	0		
7	32	24	19	15	31	24	19	15	23	18	15	14	0	0		
8	30	22	17	13	29	21	16	13	21	16	13	12	0	0		
9	28	20	15	11	27	19	15	11	19	14	11	10	0	0		
10	26	18	13	10	25	18	13	10	17	13	10	9	0	0		

### INDOOR CANDELA PLOT



### ZONAL LUMEN SUMMARY

Zone	Lumens	% Lamp	% Fixt.
0-30	247	8.5	15.7
0-40	499	17.2	31.8
0-60	1110	38.3	70.6
0-90	1572	54.2	100.0
0-180	1572	54.2	100.0

### ENERGY DATA

Total Luminaire Efficiency	54.2%
Luminaire Efficacy Rating (LER)	38
ANSI/IESNA RP-1-2004 Compliance	-
Comparative Yearly Lighting Energy Cost per 1000 Lumens	\$6.32 based on 3000 hrs. and \$0.08 per KWH

Test Date 7/14/00

## PHOTOMETRIC DATA

### LUMINAIRE DATA Test 12564

Luminaire	EN82-140TTG-LDK-TT EN Architectural Recessed 8" x 24" 1-Lamp Linear Wall Wash
Ballast	8G3375W
Ballast Factor	0.95
Lamp	F40BX
Lumens per Lamp	3150
Watts	47
Mounting	Recessed
Shielding Angle	0° = 10° 90° = 10°
Spacing Criterion	0° = N/A 90° = N/A
Luminous Opening in Feet	Length: 1.92 Width: 0.53 Height: 0.00

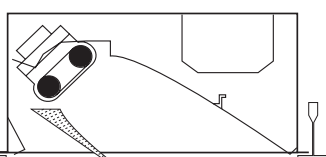
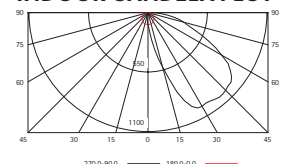
### AVG. LUMINANCE (Candela/Sq. M.)

Angle	90.0	135.0	180.0	225.0	270.0
0	1142	1142	1142	1142	1142
30	12214	9307	1185	232	110
40	14126	11185	1188	110	55
45	15184	11653	1197	75	45
50	16489	12572	1185	66	49
55	17132	13352	1143	55	37
60	16628	14386	1121	42	42
65	15318	14767	1076	50	25
70	13886	13639	1021	62	31
75	14100	11484	981	41	41
80	14742	11269	975	61	61
85	16385	12623	1699	121	121

### COEFFICIENTS OF UTILIZATION (%)

RCR	80					70					50					0
	RW	70	50	30	10	70	50	30	10	50	30	10	0	0		
1	49	46	44	42	48	45	43	41	43	41	40	36	0	0		
2	44	39	36	33	42	38	35	32	37	34	31	29	0	0		
3	39	34	29	26	38	33	29	26	31	28	25	23	0	0		
4	35	29	24	21	34	28	24	21	27	23	21	19	0	0		
5	32	25	21	17	31	25	21	17	24	20	17	16	0	0		
6	29	22	18	15	28	22	18	15	21	17	14	13	0	0		
7	27	20	16	12	26	20	15	12	19	15	12	11	0	0		
8	25	18	14	11	24	18	14	11	17	13	11	9	0	0		
9	23	16	12	9	22	16	12	9	15	12	9	8	0	0		
10	21	15	11	8	21	15	11	8	14	11	8	7	0	0		

### INDOOR CANDELA PLOT



### ZONAL LUMEN SUMMARY

Zone	Lumens	% Lamp	% Fixt.
0-30	213	6.8	14.8
0-40	435	13.8	30.2
0-60	1008	32.0	69.9
0-90	1443	45.8	100.0
0-180	1443	45.8	100.0

### ENERGY DATA

Total Luminaire Efficiency	45.8%
Luminaire Efficacy Rating (LER)	29
ANSI/IESNA RP-1-2004 Compliance	-
Comparative Yearly Lighting Energy Cost per 1000 Lumens	\$8.28 based on 3000 hrs. and \$0.08 per KWH

Test Date 7/14/00