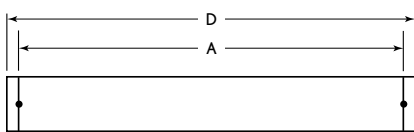


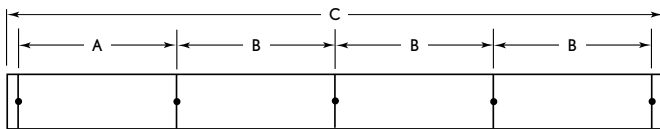


CV WM

MOUNTING INFORMATION - SUSPENDED



4', 8', 12' Single

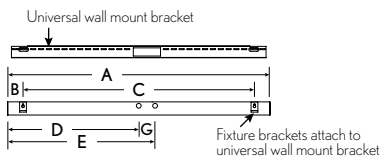


4', 8', 12' Rows

Nominal Length	Approx. Weight (lbs.)			A	B	C	D
	1-Lamp	2-Lamp	3-Lamp				
Flat End Cap							
4'	14.8	171	194	47 1/4"	48"	192 5/8"	48 5/8"
8'	26.3	28.6	30.9	95 1/4"	96"	384 5/8"	96 5/8"
12'	35.5	401	424	143 3/4"	144"	576 5/8"	144 5/8"
Sculpted End Cap							
4'	15.8	18.1	20.4	47 1/4"	48"	202 5/8"	58 5/8"
8'	27.3	29.6	31.9	95 1/4"	96"	394 5/8"	106 5/8"
12'	36.5	411	434	143 3/4"	144"	586 5/8"	154 5/8"

Note: Suspension data is computed using the standard aircraft cable assembly. Approximate weights based on single circuit.

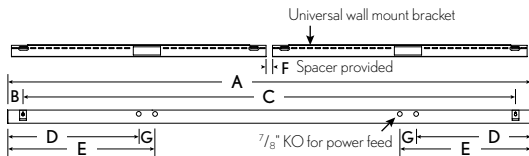
MOUNTING INFORMATION - WALL MOUNT



4' Wall Mount

Nominal Length	Approx. Weight (lbs.) 1-Lamp	A	B	C	D	E	F	G	A + Flat End Cap	A + Sculpted End Caps
									4'	8
8'	16	96 1/16"	2 3/4"	90 9/16"	24 1/16"	27 1/16"	1 9/32"	3"	96 11/16"	106 11/16"

Note: Mounting data is computed using the universal wall mount bracket system. Approximate weights based on single circuit.



8' Wall Mount

Total Luminaire Efficiency
85.3%
 Test #13184
 CV WM 2T8 PERF