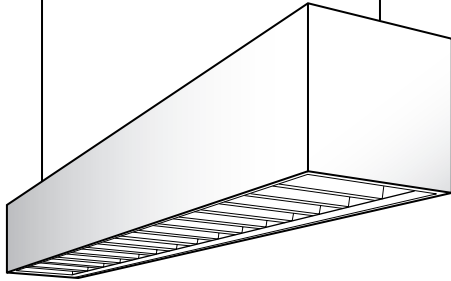




# IB66 ALUMINUM BEAM

## 6" x 6" DIRECT DISTRIBUTION

TYPE
------



Project: \_\_\_\_\_

Location: \_\_\_\_\_

### CONSTRUCTION

The housing of the IB66 is constructed of rigid extruded aluminum. End caps are aluminum and are welded to the housing. Before being painted the seam is sanded and puttied to create a seamless endcap appearance. All internal fasteners and aligners are concealed inside of the housing. For patterns aluminum connectors that are welded, sanded and puttied are provided in 90 degree, "T" and "XT" configurations.

### FINISH

Standard housing finish is powder coat matte white. Other powder coat finishes are available as an option. Please see the Options section of this binder for more details. End caps and connectors are finished the same as the housing on all painted parts. Internal components are finished in gloss white.

### SHIELDING

The IB66 is available with a parabolic louver, acrylic lens, white straight blade baffle, or a 1/2" x 1/2" small cell louver. Parabolic louvers are constructed of anodized aluminum with either a specular or semi-specular finish. They lift and shift for easy lamp access. A variety of lenses are available and are lay-in type. The white straight blade baffle is constructed of steel and finished with a gloss white finish.

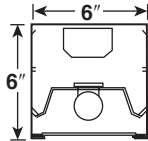
### MOUNTING

The IB66 is designed to be installed with cables or stems, surface mounted or mounted to the wall with a bracket. Precise mounting dimensions are available from the TID installation sheet. When corners are used the fixtures can be suspended from the corners. When patterns or rows are being used it is recommended that the factory be provided with a layout diagram.

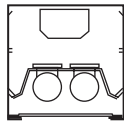
### LABELS AND ELECTRICAL

All fixtures bear appropriate UL labels. Fixtures are pre-wired with electronic T8 ballasts. Available in 120, 277, or 347 volt.

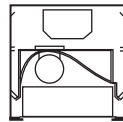
CROSS SECTIONS



1-L Downlight Lens 1D



2-L Downlight Lens 2D



1-L Asym. Downlight Parabolic 1AD

Dimensions and specifications subject to change without notice.

ORDERING INFORMATION

#### Model

IB66

#### Row Length

Specify entire row

#### Lamp Profile and Distribution

- 1D - 1 Downlight
- 2D - 2 Downlight
- 1AD - 1 Asymmetric Downlight

#### Lamp Type

T8 - T8

#### Mounting Method

- CM - Adjustable Aircraft Cable
  - PM - Pendant Mount
  - SM - Surface Mount
  - WM - Wall Mount Symmetric Distribution
  - WTW - Wall to Wall Mount
- See HGR-1 for other hanging methods.

#### Suspension Length

- 18 - 18"
  - 24 - 24"
  - 48 - 48"
  - NA - Not Applicable (Surface or wall mount)
- Other lengths are available on request.

#### Shielding

- LD - Low Iridescent Semi-Specular Alum. 3/4" deep
- LS - Specular Aluminum
- A12 - Acrylic Pattern 12
- A19 - Acrylic Pattern 19
- CA - Clear Acrylic Lens
- OA - Opal Acrylic Lens
- WCB - White Cross Baffle
- U - No Shielding

#### Voltage

- 120 - 120V
- 277 - 277V
- 347 - 347V
- U - 120V-277V

#### Housing Finish

- MW - Matte White (Std.)
- See MTX-1 for other color selections.

#### Ballast Type

- E - Electronic, Instant Start (Standard for T8)
- Unless specified, Alera will use fewest ballasts possible.

#### Fixture Length

Single or Row Individual Lengths. Note: Fixtures in rows are modular and will be identified as components within the row by their individual lengths. Lengths for this product are:  
 4 = 4'  
 8 = 8'  
 12 = 12'  
 (Longer than 12' contact factory).

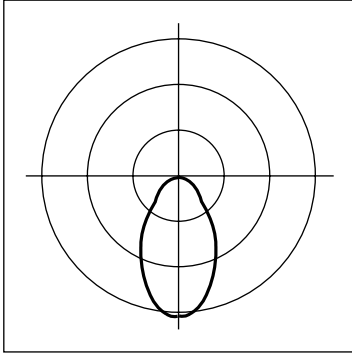
#### Options

- DL - Damp Label
- CCF - Coil Cord Feed
- GLR - Fast Blow Fuse
- GMF - Slow Blow Fuse
- EL - Emergency Battery Pack
- CSA - UL listed or CSA certified for Canada

**TWO LAMP DOWNLIGHT**

**Cat. No.:** IB66-2DT12-WCB-120-4SGL  
**Lamps:** Two F40T12/CW  
**Ballasts:** ADVANCE RQM-2S40-3-TP  
**Test No.:** 00852  
**Efficiency:** 39.2%

**Candela Curve (90° Plane)**



**CANDLEPOWER**

Deg.	Parl.	45°	Norm.
0	1560	1560	1560
5	1530	1533	1527
10	1433	1450	1469
15	1304	1335	1400
20	1158	1205	1318
25	998	1067	1224
30	835	923	1120
35	670	780	1005
40	506	638	880
45	366	500	748
50	300	374	610
55	245	272	446
60	196	209	306
65	152	156	183
70	114	111	108
75	78	73	79
80	47	40	42
85	18	10	7
90	0	0	0

**COEFFICIENTS OF UTILIZATION**

Effective Floor Cavity Reflectance = 0.20

RC RW	80				70				50			0
	70	50	30	10	70	50	30	10	50	30	10	0
1	44	42	41	40	43	41	40	39	40	39	38	35
2	41	38	36	34	40	38	36	34	36	35	33	31
3	38	35	32	30	37	34	32	30	33	31	29	28
4	35	31	29	27	34	31	28	26	30	28	26	25
5	33	28	26	23	32	28	25	23	27	25	23	22
6	30	26	23	21	30	26	23	21	25	22	21	20
7	28	24	21	19	28	23	21	19	23	20	18	18
8	26	22	19	17	26	21	19	17	21	18	16	16
9	24	20	17	15	24	19	17	15	19	16	15	14
10	23	18	15	13	22	18	15	13	17	15	13	12

**ZONAL SUMMARY**

Zone	Lumens	Lamp	Fixture
0-30	1022.	16.2	41.4
0-40	1524.	24.2	61.7
0-60	2210.	35.1	89.5
0-90	2469.	39.2	100.0
90-180	0.	.0	.0
0-180	2469.	39.2	100.0