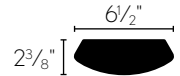


Lexim



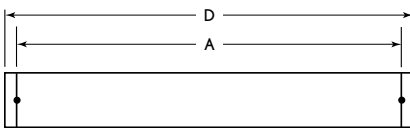
- 2-³/₈" low profile in a pleasant oval
- T5/T5HO dedicated profile
- Heavy 20-gauge construction provides excellent housing rigidity
- Solid housing (S) offers 100% indirect light
- Perforated housing option (PERF), shown above left, allows +/- 5% downlight
- All perforated housing (AP), shown above right, provides a continuous glow across the width of the unit for approximately 10% downlight
- Fixed 18" (FCM18) or optional Adjustable 48" (CM48) and 96" (CM96) aircraft cable suspension
- Unique tabbing system for simple row mount connections
- Modular mounting points for predictable hanging locations
- UL listed 1598

ORDERING INFORMATION

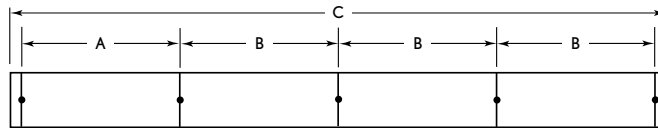
LEX	-		-		-		-		-	EP	U	-	MW	-	
MODEL LEX Lexim (Oval)	HOUSING TYPE S Solid PERF Perforated AP All Perforated (2-Lamp LEX only)				ADJUSTABLE CABLE LENGTH 48 48" 96 96"		VOLTAGE U 120V-277V	FINISH MW Matte White	OPTIONS LR Left/Right Switching IBOB Inboard/Outboard Switching, 3-Lamp Units EL One Emergency Battery Pack ^{1,2} F5841 With T5/T5HO 4100K Lamp Installed F5835 With T5/T5HO 3500K Lamp Installed						
ROW LENGTH 4 4' Single 8 8' Single 12 12' Single - Indicate row length over 8' in 4' increments Note: Rows over 12' will be configured by Alera. Example: 16' will be (2) 8'. Alternate configurations: contact factory.		LAMP TYPE & PROFILE 1T5 1T5 Lamp 2T5 2T5 Lamps 3T5 3T5 Lamps 1T5HO 1T5HO Lamp 2T5HO 2T5HO Lamps 3T5HO 3T5HO Lamps			MOUNTING METHOD FCM18 Fixed Aircraft Cable Mount (Std.) 18" CM Adjustable Aircraft Cable Mount		BALLAST EP Electronic, Programmed Start (Std. for T5 & T5HO)								

¹ Specify voltage. For additional, specify quantity before nomenclature (Example: 2EL120).
² EL is installed in right hand side of 8' unit.

MOUNTING INFORMATION – SUSPENDED



4', 8', 12' Single



4', 8', 12' Rows

Nominal Length	Approx. Weight (lbs.)			A	B	C	D
	1-Lamp	2-Lamp	3-Lamp				
4'	10.5	11.2	12.5	47 ¹ / ₂ "	48"	192 ¹ / ₈ "	48 ¹ / ₈ "
8'	21	22.4	25	95 ¹ / ₂ "	96"	384 ¹ / ₈ "	96 ¹ / ₈ "
12'	31.5	33.6	37.5	143 ¹ / ₂ "	144"	576 ¹ / ₈ "	144 ¹ / ₈ "

Note: Suspension data is computed using the standard aircraft cable assembly and standard flat end cap. Approximate weights based on single circuit.

■ Optional profile generic factory installed EL packs available. See page 17 for details.

