

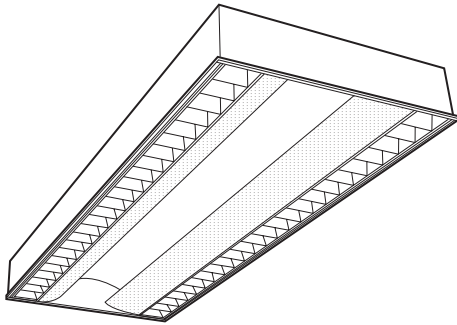


INDIRECT

Lumio SL

2' x 4', TWIN TUBE

TYPE



Project: _____

Location: _____

CONSTRUCTION

Luminaire housing and end caps are die formed code gauge cold rolled steel. The aluminum reflector is profiled to a precision curve and finished with a matte white paint that provides soft, uniform, indirect illumination. Matte white perforated light side baskets are attached to the louver frames and snap securely into place. Louvers can be removed for ease of lamp replacement.

SHIELDING

Perforated metal light basket (51% opening) with opal acrylic overlays is standard around one side of each louver. True parabolic louvers provide precise optical control and reduce glare. Louvers are manufactured from a low iridescent specular aluminum.

FINISH

White powder coat finish on the housing, light baskets, and reflector is applied after fabrication. Provides a soft, non-glare surface.

INSTALLATION

For fast wiring connections without the necessity of opening fixture or wireway, a flex connector adaptor plate is furnished with each luminaire.

LABELS AND ELECTRICAL

All luminaires are listed with UL and bear appropriate recessed fixture labels. Completely wired with class "P", thermally protected, resetting, HPF, CBM ballast. Sound rated A. All ballast leads extend a minimum of 6" through the access opening.

CEILING COMPATIBILITY

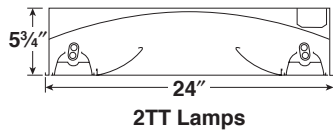
Luminaire is designed to fit into a lay-in grid ceiling. Flange kits are available.

SURFACE OR PENDANT MOUNT

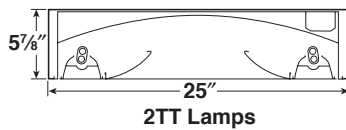
Attractive surface mount units available to match performance and aesthetics of recessed models.

CROSS SECTIONS

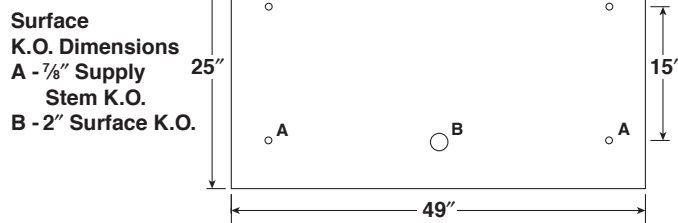
Recessed



Surface



Top View



Surface
K.O. Dimensions
A - 7/8" Supply
Stem K.O.
B - 2" Surface K.O.

Dimensions and specifications subject to change without notice.

ORDERING INFORMATION

Model

LUMSL - Lumio Side Basket with Louver

Size

24 - 2' x 4'

No. of Lamps in Cross Section

2 - Two

Lamp Type

40TT - 40 Watt Twin Tube Compact Fluorescent
50TT - 50 Watt Twin Tube Compact Fluorescent

Ceiling Type

G - Grid Lay-in
SM - Surface Mount (For hard ceilings use flange kit)

Shielding/Louver Finish

LS - Low Iridescent Specular
For other finishes contact factory.

Voltage

120 - 120V
277 - 277V
347 - 347V
U - 120V-277V

Ballast Type

ETT - Electronic Twin Tube, Instant Start
Unless specified, Alera will use fewest ballasts possible.

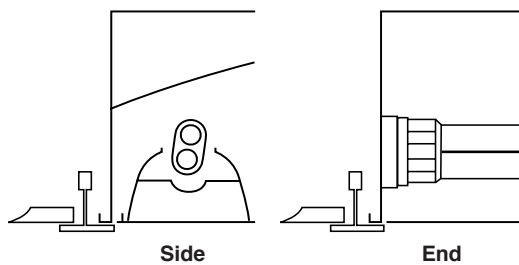
Options

FK24 - 2x4 Flange Kit
DL - Damp Label
GLR - Fast Blow Fuse
GMF - Slow Blow Fuse
EL - Emergency Battery Pack
CSA - UL listed or CSA certified for Canada

CONTACT FACTORY

CEILING COMPATIBILITY & FLANGE DETAIL

Type G

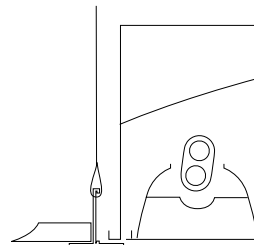


Side

End

For lay-in installation in exposed grid ceilings. Maximum tee widths of 1" and maximum tee heights of 1½" allowed.

Flange Kit Trim, FK24



For hard ceiling applications, fixtures must be ordered with a flange kit that wires directly into the concealed ceiling opening for a clean finished appearance. For row configurations contact your local Alera Representative.

Flange kit cut out dimension for single FK24 only: 24³/₈" x 48³/₈"