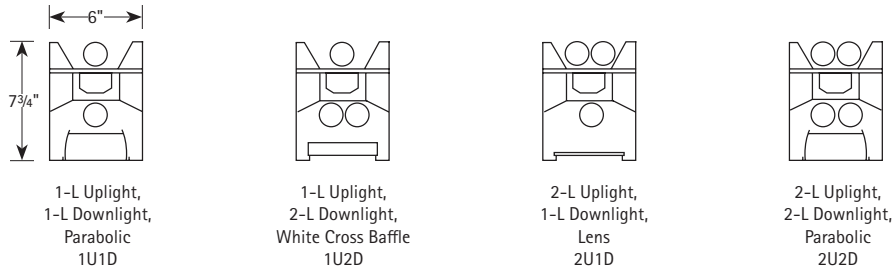


CROSS SECTION

PHOTOMETRIC DATA
LUMINAIRE DATA Test 10974

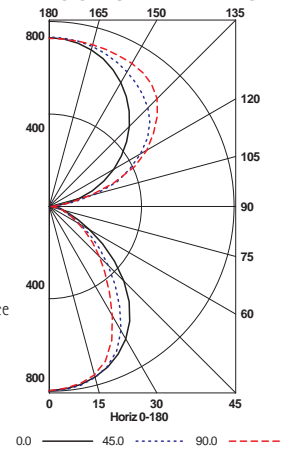
Luminaire	MS6-1U1DT8-A12-411-EB8 MS6 Architectural Beam 6" x 48" WITH 1-LAMP UP NO SHIELDING AND 1-LAMP DOWN A-12 LENS
Ballast	B2321120RH
Ballast Factor	0.95
Lamp	FO32/741
Lumens per Lamp	2900
Watts	60
Shielding Angle	0° = 90 90° = 90
Spacing Criterion	0° = 1.23 90° = 1.07
Luminous Opening in Feet	Length: 3.96 Width: 0.40 Height: 0.00

AVG. LUMINANCE (Candela/Sq. M.)

Angle	0.0	22.5	45.0	67.5	90.0
0	5416	5416	5416	5416	5416
30	5194	5147	4865	4449	4284
40	4772	4533	3930	3477	3335
45	4392	4065	3450	3056	2950
50	3890	3499	3002	2664	2590
55	3329	2914	2571	2287	2251
60	2732	2392	2120	1971	1943
65	2219	1994	1704	1769	1704
70	1848	1729	1450	1649	1589
75	1707	1654	1444	1602	1602
80	1918	1722	1604	1565	1604
85	1949	1715	1403	1326	1326

COEFFICIENTS OF UTILIZATION (%)

RCR	RC	80					70					50					0				
		RW	70	50	30	10	70	50	30	10	50	30	10	0	30	10	0				
1	68	65	63	60	62	60	57	55	49	47	46	24									
2	62	58	53	50	57	53	49	46	43	41	39	21									
3	57	51	46	42	52	47	42	39	38	35	33	18									
4	53	45	40	36	48	42	37	33	34	31	28	16									
5	48	40	35	31	44	37	32	29	31	27	25	14									
6	45	36	31	27	41	34	29	25	28	24	22	13									
7	41	33	28	24	38	30	26	22	25	22	19	11									
8	38	30	25	21	35	28	23	20	23	20	17	10									
9	36	27	22	19	33	25	21	18	21	18	15	9									
10	33	25	20	17	30	23	19	16	20	16	14	9									

INDOOR CANDELA PLOT


RCR = Room Cavity Ratio
RC = Effective Ceiling Cavity Reflectance RW = Wall Reflectance

ENERGY DATA

Total Luminaire Efficiency	71.1%
Luminaire Efficacy Rating (LER)	65
ANSI/IESNA RP-1-2004 Compliance	Yes-VDT Intensive Use
Comparative Yearly Lighting Energy Cost per 1000 Lumens	\$3.69 based on 3000 hrs. and \$0.08 per KWH

ZONAL LUMEN SUMMARY

Zone	Lumens	% Lamp	% Fixt.
0-30	604	10.4	14.6
0-40	937	16.2	22.7
0-60	1427	24.6	34.6
0-90	1633	28.1	39.6
90-120	601	10.4	14.6
90-130	1042	18.0	25.3
90-150	1901	32.8	46.1
90-180	2491	42.9	60.4
0-180	4124	71.1	100.0

Test Date 9/19/94

PHOTOMETRIC DATA
LUMINAIRE DATA Test 10984

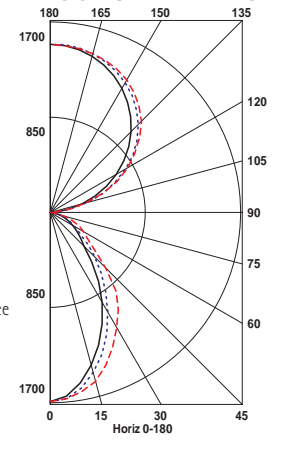
Luminaire	MS6-2U2DT8-WCB-4EB8 MS6 Architectural Beam 6 x 48 WITH 2-LAMPS UP NO SHIELDING AND 2-LAMPS DOWN WHITE LVR
Ballast	B4321120RH
Ballast Factor	0.91
Lamp	FO32/741
Lumens per Lamp	2900
Watts	12
Shielding Angle	0° = 45 90° = 47
Spacing Criterion	0° = 0.90 90° = 1.07
Luminous Opening in Feet	Length: 3.96 Width: 0.40 Height: 0.00

AVG. LUMINANCE (Candela/Sq. M.)

Angle	0.0	22.5	45.0	67.5	90.0
0	11477	11477	11477	11477	11477
30	7274	7509	8051	8788	9290
40	5101	5464	6263	7425	8099
45	4104	4411	5430	6352	6708
50	3721	3795	4556	5170	5392
55	3424	3483	3803	4348	4763
60	3139	3194	3398	4050	4621
65	2894	2926	3119	3779	4567
70	2662	2702	2841	3318	4113
75	2416	2442	2521	2836	3387
80	2152	2152	2191	2309	2348
85	1559	1637	1637	1637	1637

COEFFICIENTS OF UTILIZATION (%)

RCR	RC	80					70					50					0				
		RW	70	50	30	10	70	50	30	10	50	30	10	0	30	10	0				
1	61	59	57	54	56	53	52	50	43	42	41	21									
2	56	52	48	45	51	47	44	42	39	36	35	18									
3	52	46	42	38	47	42	38	35	34	32	30	16									
4	47	41	36	33	43	37	33	30	31	28	26	14									
5	44	37	32	28	40	34	29	26	28	25	22	13									
6	40	33	28	25	37	30	26	23	25	22	20	11									
7	37	30	25	22	34	28	23	20	23	20	17	10									
8	35	27	23	19	32	25	21	18	21	18	16	9									
9	32	25	20	17	29	23	19	16	19	16	14	9									
10	30	23	18	16	28	21	17	15	18	15	13	8									

INDOOR CANDELA PLOT


RCR = Room Cavity Ratio
RC = Effective Ceiling Cavity Reflectance RW = Wall Reflectance

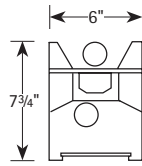
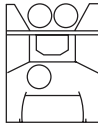
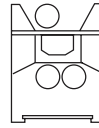
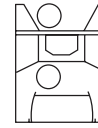
ENERGY DATA

Total Luminaire Efficiency	64.3%
Luminaire Efficacy Rating (LER)	61
ANSI/IESNA RP-1-2004 Compliance	Yes-VDT Intensive Use
Comparative Yearly Lighting Energy Cost per 1000 Lumens	\$3.93 based on 3000 hrs. and \$0.08 per KWH

ZONAL LUMEN SUMMARY

Zone	Lumens	% Lamp	% Fixt.
0-30	1130	9.7	15.2
0-40	1684	14.5	22.6
0-60	2429	20.9	32.6
0-90	2775	23.9	37.2
90-120	1057	9.1	14.2
90-130	1847	15.9	24.8
90-150	3486	30.1	46.8
90-180	4681	40.4	62.8
0-180	7456	64.3	100.0

Test Date 9/18/07

CROSS SECTION

 1-L Uplight,
1-L Asym. Downlight,
Lens
1U1AD

 2-L Uplight,
1-L Asym. Downlight,
Parabolic
2U1AD

 1-L Asym. Uplight,
2-L Downlight,
Lens
1AU2D

 1-L Asym. Uplight,
1-L Asym. Downlight,
Parabolic
1AU1AD

PHOTOMETRIC DATA
LUMINAIRE DATA Test 10985

Luminaire	MS6-2U2DT8-LD-4EB8 MS6 Architectural Beam 6 x 48 W/2-LAMPS UP NO SHIELDING AND 2-LAMPS DOWN SEMI- SPEC LVR
Ballast	B4321120RH
Ballast Factor	0.91
Lamp	F032/741
Lumens per Lamp	2900
Watts	112
Shielding Angle	0° = 28 90° = 1.24
Spacing Criterion	0° = 1.03 90° = 1.25
Luminous Opening in Feet	Length: 3.96 Width: 0.40 Height: 0.00

AVG. LUMINANCE (Candela/Sq. M.)

Angle	0.0	22.5	45.0	67.5	90.0
0	9493	9493	9493	9493	9493
30	8914	9126	8969	8961	9039
40	8321	8427	8339	8959	9146
45	7755	7765	7823	7669	7717
50	6681	6565	6502	5730	5392
55	3969	4395	4419	3602	3542
60	1006	1509	2147	2215	2528
65	498	531	788	1013	965
70	318	338	397	497	536
75	210	236	263	315	341
80	157	196	196	235	274
85	78	78	78	156	156

COEFFICIENTS OF UTILIZATION (%)

RCR	RW	80				70				50				0			
		70	50	30	10	70	50	30	10	50	30	10	0	0	0	0	
1	62	59	57	55	56	54	52	50	44	43	41	21	0	0	0	0	
2	57	52	49	46	51	48	45	42	39	37	35	19	0	0	0	0	
3	52	47	42	39	47	43	39	36	35	33	30	17	0	0	0	0	
4	48	42	37	33	43	38	34	31	31	29	26	15	0	0	0	0	
5	44	37	32	29	40	34	30	27	28	25	23	13	0	0	0	0	
6	41	33	29	25	37	31	27	24	26	23	20	12	0	0	0	0	
7	38	30	25	22	34	28	24	21	23	20	18	11	0	0	0	0	
8	35	27	23	20	32	25	21	18	21	18	16	10	0	0	0	0	
9	32	25	21	17	30	23	19	16	20	16	14	9	0	0	0	0	
10	30	23	19	16	28	21	17	15	18	15	13	8	0	0	0	0	

RCR = Room Cavity Ratio

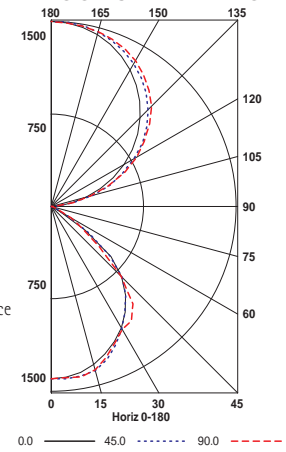
RC = Effective Ceiling Cavity Reflectance RW = Wall Reflectance

ZONAL LUMEN SUMMARY

Zone	Lumens	% Lamp	% Fixt.
0-30	1086	9.4	14.6
0-40	1755	15.1	23.6
0-60	2685	23.1	36.1
0-90	2764	23.8	37.1
90-120	1057	9.1	14.2
90-130	1847	15.9	24.8
90-150	3486	30.1	46.8
90-180	4681	40.4	62.9
0-180	7445	64.2	100.0

ENERGY DATA

Total Luminaire Efficiency	64.2%
Luminaire Efficacy Rating (LER)	61
ANSI/IESNA RP-1-2004 Compliance	Yes-VDT Intensive Use
Comparative Yearly Lighting Energy Cost per 1000 Lumens	\$3.93 based on 3000 hrs. and \$0.08 per KWH

INDOOR CANDELA PLOT


Test Date 9/20/94