

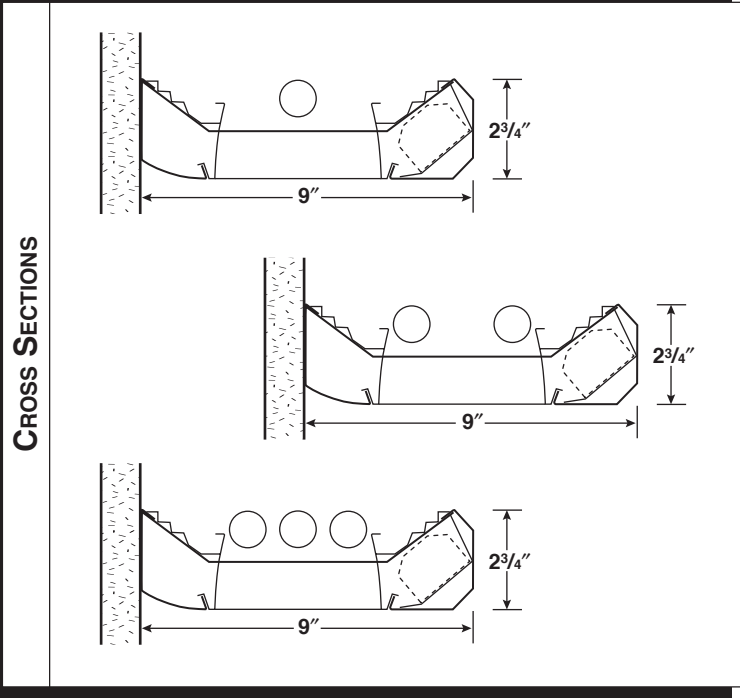
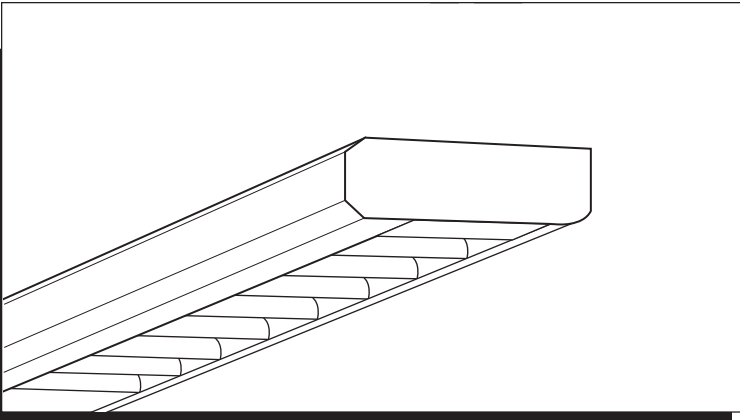


DIRECT/INDIRECT

# SOLO

## SOLARIS OCTAGONAL WALL MOUNT

TYPE



Project: \_\_\_\_\_

Location: \_\_\_\_\_

### CONSTRUCTION

Solo is a direct/indirect luminaire constructed of code gauge steel. Available in 4' and 8' housings, Solo is reinforced to provide maximum rigidity across the entire housing. Endcaps are made of 16-gauge construction and attach with nuts and bolts. Aligners are supplied for intermediate connection points, providing sturdy attachment for straight continuous rows. Upper reflectors are constructed of specular anodized aluminum for precise upward distribution. In addition to a standard 60/40 distribution, four other distribution options are available. Relamped from above, Solo is available with one, two, or three T8 lamps and one, two, or three T5 and T5HO lamps.

### FINISH

The housing is finished with a baked powder coat matte white finish as standard. Endcaps and intermediate aligners are painted to match the housing.

### SHIELDINGS

The parabolic louver is securely attached to the housing from the top, eliminating any chance of loosening or falling from the fixture. Constructed of semi-specular anodized aluminum, the eleven-cell louver measures 1 1/2" high and provides maximum efficiency and a glare-free environment. Guaranteed to be free from defects for a period of 25 years, the aluminum finish will remain dust and fingerprint free.

### MOUNTING

The wall mount Solo mounts directly to and is flush to the wall. A 7/8" hole is provided to mount to a junction box. If a junction box larger than 2" in diameter is used, a cover plate must be used to cover the exposed junction box. A plate is provided with each fixture for this purpose. Key-hole slots on the back of the unit provide additional support. Consult the Installation Sheet for exact dimensions and locations of holes and slots.

### LABELS AND ELECTRICAL

Fixtures bear appropriate UL or CSA labels. Available in 120, 277, or 347 volt, fixtures are prewired with small case electronic T8 ballasts and quick disconnect plugs.

Dimensions and specifications subject to change without notice.

## SOLO - - - - E - - - -

ORDERING INFORMATION

#### Model

SOLO - Solaris Octagonal

#### Row Length

Specify entire row

#### Lamp Type & Profile

- 1T8 - One T8 Lamp
- 2T8 - Two T8 Lamps
- 3T8 - Three T8 Lamps
- 1T5 - One T5 Lamp
- 2T5 - Two T5 Lamps
- 3T5 - Three T5 Lamps
- 1T5HO - One T5HO Lamp
- 2T5HO - Two T5HO Lamps
- 3T5HO - Three T5HO Lamps

#### Mounting Method

WM - Wall Mount

#### Louver Finish

- LD - Non-Iridescent Semi-Specular Anodized Aluminum (Std.)
- LS - Low Iridescent Specular
- LD18 - 18-cell Low Iridescent Semi-Specular

#### Distribution

- Blank - 60% Uplight, 40% Downlight (Std.)
  - 0/100 - Downlight Only (0% Uplight, 100% Downlight)\*
  - 20/80 - 20% Uplight, 80% Downlight\*
  - 40/60 - 40% Uplight, 60% Downlight\*
  - 85/15 - 85% Uplight, 15% Downlight
- \*Dust cover not available when using these optical distribution covers.

#### Voltage

- 120 - 120V
- 277 - 277V
- 347 - 347V
- U - 120V-277V

#### Housing Finish

MW - Matte White (Std.)  
See MTX-1 for other color selections.

#### Ballast Type

E - Electronic, Instant Start (Standard for T8)  
Unless specified, Alera will use fewest ballasts possible.

#### Fixture Length

Single or Row Individual Lengths.  
Note: Fixtures in rows are modular and will be identified as components within the row by their individual lengths.  
Lengths for this product are:  
4 = 4'  
8 = 8'

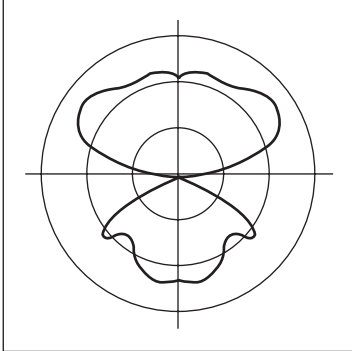
#### Options

- DL - Damp Label
- IBOB - Inboard/Outboard Switching
- DC - Dust Cover
- GLR - Fast Blow Fuse
- GMF - Slow Blow Fuse
- EL - Emergency Battery Pack (Small case EL)
- CSA - UL listed or CSA certified for Canada

TWO LAMP

Cat. No.: SOLO-2T8-LD-E  
 Lamps: Two F32T8  
 Ballasts: RCN-2P32-SC  
 Test No.: 12635  
 Efficiency: 92.8  
 S/MH: Parl 1.21 Norm 1.30  
 Max Candela (Down): 779 @ 15°  
 Max Candela (Up): 905 @ 125°

Candela Curve (90° Plane)



CANDLEPOWER			
Deg.	Parl.	45°	Norm.
0	746	746	746
5	740	753	754
15	712	779	779
25	645	717	717
35	551	622	622
45	418	502	585
55	254	386	712
65	75	238	281
75	6	17	28
85	2	3	5
90	0	0	0
95	26	132	135
105	125	510	538
115	248	653	826
125	373	691	905
135	489	701	884
145	588	710	823
155	667	763	787
165	721	791	811
175	749	769	772
180	756	756	756

**ENERGY DATA**  
 Energy Cost: \$3.12\* LER: 77  
 Input Watts: 62 BF: .88  
 \*Comparative annual lighting energy cost per 1000 lumens based on 3000 hours and \$0.08 per KWH.

COEFFICIENTS OF UTILIZATION													
Effective Floor Cavity Reflectance = 0.20													
RC	RW	80				70				50			0
		70	50	30	10	70	50	30	10	50	30	10	
1	89	85	82	79	80	77	75	72	63	61	59	31	
2	81	75	70	66	74	69	64	60	56	53	50	27	
3	75	67	60	55	68	61	55	51	50	46	43	23	
4	68	59	52	47	62	54	48	43	44	40	37	20	
5	62	52	45	40	57	48	42	37	39	35	31	17	
6	57	47	39	34	52	43	36	32	35	31	27	15	
7	53	42	35	30	48	38	32	27	32	27	23	13	
8	49	37	30	26	44	34	28	24	28	24	20	11	
9	45	34	27	22	41	31	25	21	26	21	18	10	
10	42	31	24	20	38	28	22	18	23	19	16	8	

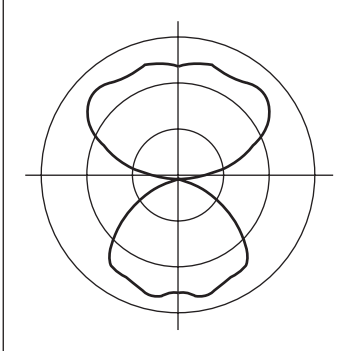
ZONAL SUMMARY			
Zone	Lumens	Lamp	Fixture
0-30	610	10.5	11.3
0-40	993	17.1	18.4
0-60	1770	30.5	32.9
0-90	2000	34.5	37.2
90-120	1159	20.0	21.5
90-130	1752	30.2	32.6
90-150	2742	47.3	51.0
90-180	3382	58.3	62.8
0-180	5382	92.8	100.0

LUMINANCE SUMMARY			
Footlamberts			
Degree	Parl.	45°	Norm.
55	996	1514	2793
60	729	1581	2527
65	398	1270	1494
70	80	574	440
75	54	143	241
80	40	101	165
85	40	80	121

THREE LAMP

Cat. No.: SOLO-3T8-LD-E  
 Lamps: Three F32T8  
 Ballasts: B3321120RH-A  
 Test No.: 12637  
 Efficiency: 88.6  
 S/MH: Parl 1.21 Norm 1.47  
 Max Candela (Down): 1223 @ 15°  
 Max Candela (Up): 1258 @ 135°

Candela Curve (90° Plane)



CANDLEPOWER			
Deg.	Parl.	45°	Norm.
0	1172	1172	1172
5	1165	1180	1179
15	1121	1212	1223
25	1016	1148	1182
35	870	1044	1140
45	660	901	1034
55	400	625	769
65	114	268	294
75	9	22	34
85	2	3	4
90	0	0	0
95	43	116	116
105	199	503	508
115	394	803	883
125	589	988	1139
135	769	1060	1258
145	920	1094	1240
155	1039	1168	1210
165	1122	1208	1231
175	1164	1188	1189
180	1172	1172	1172

**ENERGY DATA**  
 Energy Cost: \$3.12\* LER: 77  
 Input Watts: 89 BF: .88  
 \*Comparative annual lighting energy cost per 1000 lumens based on 3000 hours and \$0.08 per KWH.

COEFFICIENTS OF UTILIZATION													
Effective Floor Cavity Reflectance = 0.20													
RC	RW	80				70				50			0
		70	50	30	10	70	50	30	10	50	30	10	
1	86	82	79	76	78	75	72	70	62	60	58	32	
2	79	73	68	64	72	67	62	59	55	52	50	28	
3	72	64	59	54	66	59	54	50	49	46	43	25	
4	66	57	51	46	60	53	47	43	44	40	37	22	
5	61	51	44	39	55	47	41	36	39	35	31	19	
6	56	45	39	34	51	42	36	32	35	31	27	16	
7	51	41	34	29	47	38	32	27	31	27	24	14	
8	47	36	30	25	43	34	28	24	28	24	20	12	
9	43	33	26	22	40	30	24	20	25	21	18	10	
10	40	30	23	19	37	27	22	18	23	19	16	9	

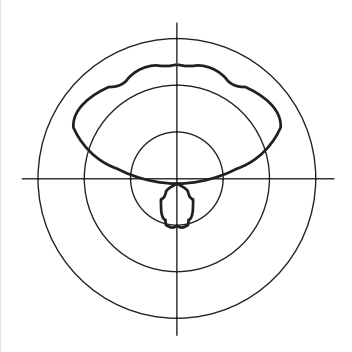
ZONAL SUMMARY			
Zone	Lumens	Lamp	Fixture
0-30	970	11.1	12.6
0-40	1618	18.6	21.0
0-60	2827	32.5	36.7
0-90	3104	35.7	40.3
90-120	1307	15.0	17.0
90-130	2129	24.5	27.6
90-150	3621	41.6	47.0
90-180	4603	52.9	59.7
0-180	7707	88.6	100.0

LUMINANCE SUMMARY			
Footlamberts			
Degree	Parl.	45°	Norm.
55	1570	2452	3017
60	1143	1998	2612
65	607	1428	1566
70	108	622	507
75	74	191	294
80	63	134	190
85	47	87	102

TWO LAMP - 85/15

Cat. No.: SOLO-2T8 85/15-LD-E  
 Lamps: Two F32T8  
 Ballasts: RCN-2P32-SC  
 Test No.: 12636  
 Efficiency: 885.7  
 S/MH: Parl 1.09 Norm 1.15  
 Max Candela (Down): 360 @ 5°  
 Max Candela (Up): 1084 @ 125°

Candela Curve (90° Plane)



CANDLEPOWER			
Deg.	Parl.	45°	Norm.
0	356	356	356
5	352	360	360
15	327	359	359
25	279	309	310
35	220	238	238
45	153	156	186
55	83	95	117
65	23	40	55
75	2	7	7
85	2	0	0
90	0	0	0
95	51	139	142
105	211	569	587
115	388	803	965
125	558	868	1084
135	709	907	1082
145	837	940	1048
155	936	1014	1035
165	1004	1052	1066
175	1038	1053	1050
180	1045	1045	1045

**ENERGY DATA**  
 Energy Cost: \$3.43\* LER: 70  
 Input Watts: 63 BF: .88  
 \*Comparative annual lighting energy cost per 1000 lumens based on 3000 hours and \$0.08 per KWH.

COEFFICIENTS OF UTILIZATION													
Effective Floor Cavity Reflectance = 0.20													
RC	RW	80				70				50			0
		70	50	30	10	70	50	30	10	50	30	10	
1	77	74	71	68	67	65	62	60	48	46	45	11	
2	71	65	60	56	62	57	53	50	42	40	38	10	
3	65	57	52	47	56	50	46	42	38	34	32	9	
4	59	51	45	40	52	45	40	36	33	30	27	8	
5	54	45	39	34	47	40	34	30	30	26	24	7	
6	50	40	34	29	43	36	30	26	27	23	20	6	
7	46	36	30	25	40	32	27	23	24	20	18	5	
8	42	32	26	22	37	29	24	20	22	18	15	5	
9	39	29	23	19	34	26	21	17	20	16	14	4	
10	36	27	21	17	32	24	19	15	18	14	12	4	

ZONAL SUMMARY			
Zone	Lumens	Lamp	Fixture
0-30	272	4.7	5.5
0-40	419	7.2	8.4
0-60	634	10.9	12.7
0-90	682	11.8	13.7
90-120	1387	23.9	27.9
90-130	2139	36.9	43.0
90-150	3433	59.2	69.0
90-180	4290	74.0	86.3
0-180	4973	85.7	100.0

LUMINANCE SUMMARY			
Footlamberts			
Degree	Parl.	45°	Norm.
55	327	371	458
60	229	288	345
65	123	212	291
70	26	140	110
75	21	64	64
80	28	44	40
85	40	8	0